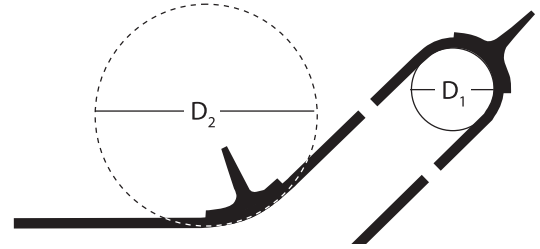
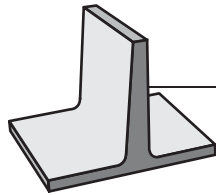


SIDEWALL CLEAT STYLES

Apache has cleat configurations that provide maximum productivity and handling efficiency, based on the type of material being carried and the angle of inclination. Straight T-Cleats are recommended on inclines up to 50°. The C or S cleats allow for larger handling capacities on inclines greater than 40°. Two piece combination cleats are also available, in which T or S paddles can be interchanged by bolting them to the cleat base. Larger cleats are bolted to the sidewalls to increase their strength and insure lasting reliability.

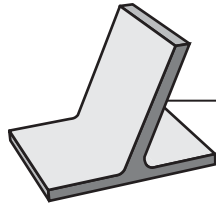


Use chart section D1 and D2 of desired cleat.



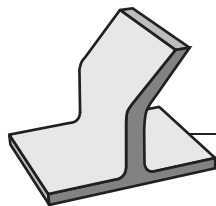
T-Cleat

T-Cleat	T-100	T-150	T-200	T-250	T-300	T-350	T-400
Height	1"	1.5"	2"	2.5"	3"	3.5"	4"
D ₁	4"	5"	6"	8"	10"	14"	14"
D ₂	8"	8"	10"	10"	12"	16"	18"



C-Cleat

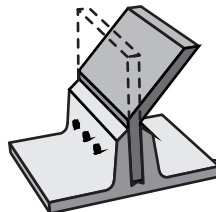
C-Cleat	C-200	C-250	C-300	C-350	C-400	C-450
Height	2"	2.5"	3"	3.5"	4"	4.5"
D ₁	6"	8"	8"	10"	12"	12"
D ₂	10"	12"	12"	16"	16"	16"



S-Cleat

Larger sizes available upon request.

S-Cleat	S-300	S-350	S-400	S-450	S-500	S-550	S-700	S-900
Height	3"	3.5"	4"	4.5"	5"	5.5"	7"	9"
D ₁	8"	11"	12"	12"	16"	16"	16"	20"
D ₂	12"	16"	16"	18"	20"	20"	20"	24"



Bolted Cleat (S or T)

Larger sizes available upon request.

Bolted-Cleat	S/T 450	S/T 500	S/T550	S/T600	S/T700	S/T900
Height	4.5"	5"	5.5"	6"	7"	9"
D ₁	14"	14"	14"	14"	14"	14"
D ₂	20"	20"	20"	20"	20"	20"