

NEW!

from

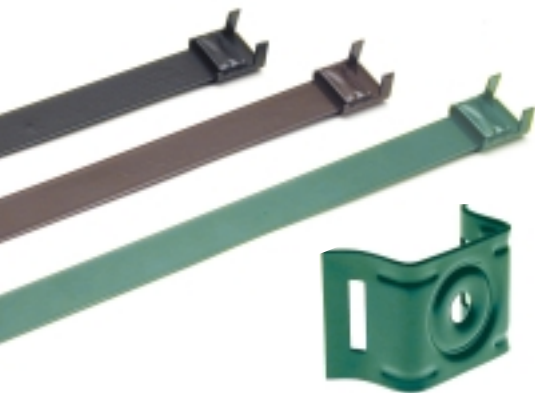
BAND-IT



IT9000

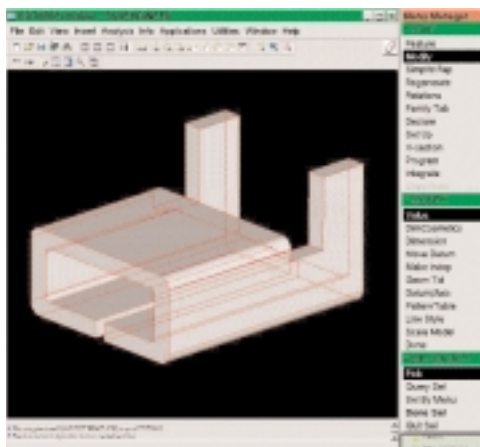
Electric Bench Mount Hose Clamping Tool

The most accurate bench tool on the market, the IT9000 makes a precise, repeatable assembly time after time. Featuring automatic cut-off, automatic tail ejection and automatic reset, this electronically controlled tool includes heavy duty gearing and a 22 inch single-pull take-up for fast, reliable production. Interchangeable heads are available for Ultra-Lok, BAND-IT Jr. and Center Punch clamps. Download a video.



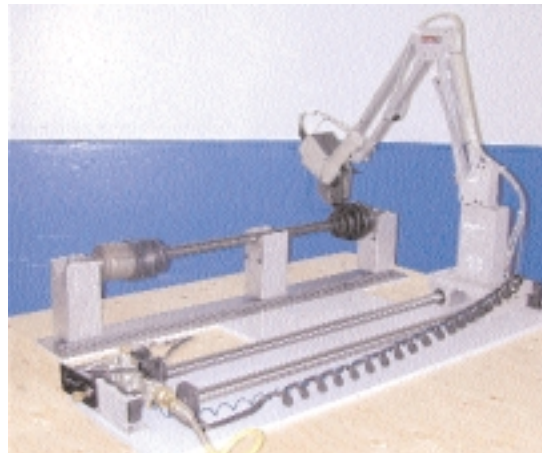
Powder Coated Clamps & Hardware

Durable, color-coordinated powder coated finishes can be applied to many BAND-IT products to match contemporary styles of posts, poles and mounting hardware.



1/2" Ultra-Lok

Our famous Ultra-Lok band clamps are now available in 1/2" widths for applications that don't require our heavy-duty 3/4" Ultra-Loks. Available both as preformed and free-end clamps in a range of sizes, 1/2" Ultra-Loks are made of Type 201 1/4 hardened steel for clamps that are two to three times stronger than conventional band and buckle clamps.



Pneumatic Fixture Tool

The BAND-IT IT1000 Heavy Duty Pneumatic Tool is mounted on a unique fixture tool for high-volume rebuilders who demand high-speed, uniform clamping. Smooth operation and ergonomic design contribute substantially to operator comfort.

3D Models and CAD Drawings

Call BAND-IT engineering for 3 Dimensional models or CAD drawings for incorporation into your design.



Applications

Band & Buckle Systems

Preformed Clamping Systems

Ultra-Lok

Stainless Steel Ties

Clamping Kits

Identification Systems

Mounting Hardware

Hose Fittings

Cal Data