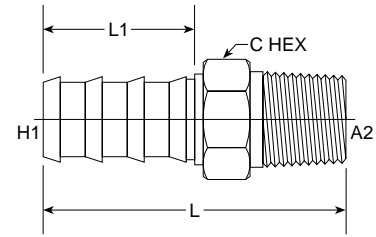
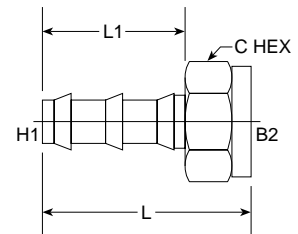


PL-MP Straight 2113 Series



PART NO. SIZE	H1 HOSE I.D.	A2 NPTF	L LGTH M.M.	L1 LGTH M.M.	C HEX	C HEX	M.M.	Standard Material From Stock					
								S	FG	SS	B		
2113-04-02	1/4	1/8-27	1.290	32.77	0.700	17.78	7/16	0.4375	11.11			•	•
2113-04-04	1/4	1/4-18	1.430	36.32	0.700	17.78	9/16	0.562	14.28			•	•
2113-04-06	1/4	3/8-18	1.430	36.32	0.700	17.78	11/16	0.687	17.46			•	•
2113-05-02	5/16	1/2-27	1.416	35.97	0.819	20.80	7/16	0.438	11.13			•	•
2113-05-04	5/16	1/4-18	1.660	42.16	0.871	22.12	9/16	0.562	14.27			•	•
2113-06-02	3/8	1/8-27	1.450	36.83	0.830	21.08	1/2	0.500	12.70			•	•
2113-06-04	3/8	1/4-18	1.550	39.37	0.830	21.08	9/16	0.562	14.28			•	•
2113-06-06	3/8	3/8-18	1.620	41.15	0.830	21.08	11/16	0.687	17.46			•	•
2113-06-08	3/8	1/2-14	1.670	42.42	0.830	21.08	7/8	0.875	22.22			•	•
2113-08-04	1/2	1/4-18	1.770	44.96	0.930	23.62	11/16	0.687	17.46			•	•
2113-08-06	1/2	3/8-18	1.810	45.97	1.000	25.40	11/16	0.687	17.46			•	•
2113-08-08	1/2	1/2-14	1.860	47.24	1.000	25.40	7/8	0.875	22.22			•	•
2113-08-12	1/2	3/4-14	1.970	50.04	0.930	23.62	1 1/16	1.062	26.99			•	•
2113-10-06	5/8	3/8-18	2.370	60.20	1.560	39.62	3/4	0.750	19.05			•	•
2113-10-08	5/8	1/2-14	2.550	64.77	1.500	38.10	7/8	0.875	22.22			•	•
2113-10-12	5/8	3/4-14	2.500	63.51	1.500	38.10	1 1/16	1.062	26.99			•	•
2113-12-08	3/4	1/2-14	2.450	62.23	1.500	38.10	7/8	0.875	22.22			•	•
2113-12-12	3/4	3/4-14	2.450	62.23	1.400	35.56	1 1/16	1.062	26.99			•	•

PL-FIF Straight 2114 Series



PART NO. SIZE	H1 HOSE I.D.	B2 SAE 45	L LGTH M.M.	L1 LGTH M.M.	C HEX	C HEX	M.M.	Standard Material From Stock					
								S	FG	SS	B		
2114-04-03	1/4	3/8-24	1.170	29.72	0.760	19.30	7/16	0.438	11.11			•	•
2114-04-04	1/4	7/16-20	1.110	28.19	0.700	17.78	1/2	0.500	25.40			•	•
2114-04-05	1/4	1/2-20	1.570	39.88	0.700	17.78	9/16	0.562	14.28			•	•
2114-06-05	3/8	1/2-20	1.275	32.38	0.830	21.08	9/16	0.562	14.28			•	•
2114-06-06	3/8	5/8-18	1.330	33.78	0.830	21.08	3/4	0.750	19.05			•	•
NEW 2114-08-08												•	•