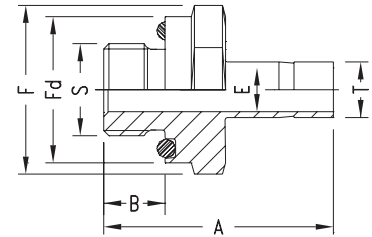


O-Seal Male Adapter N2429

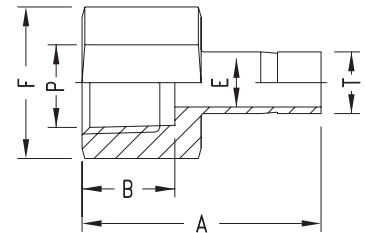
INCH OD Tubes x Male Straight Threads - UNF



Part No.	T Tube OD	S UNF Male	A	B	E min.	F	Fd A/F	O Ring Part No.
N2429-02-02	1/8	5/16-24	32.5	8.6	2.4	14	13.8	1 OPU
N2429-04-04	1/4	7/16-24	39.2	10.4	4.8	19	18.8	2 OPU
N2429-05-05	5/16	1/2-24	41.7	11.2	6.3	22	21.8	3 OPU
N2429-06-06	3/8	9/16-24	43.2	12.0	7.1	24	23.6	4 OPU
N2429-08-08	1/2	3/4-24	49.5	12.0	9.9	27	26.8	6 OPU
N2429-12-12	3/4	1-1/16-12	55.0	14.3	15.0	38	37.8	12 OPU
N2429-16-16	1	1-5/16-12	62.5	14.3	19.8	45	44.0	16 OPU
N2429-20-20	1-1/4	1-5/8-12	79.5	18.3	27.4	55	54.0	20 OPU
N2429-24-24	1-1/2	1-7/8-12	92.2	19.8	33.3	60	58.0	24 OPU

Female Adapter N2430

INCH OD Tubes X Female NPT Threads



Part No.	T Tube OD	P NPT Female	A	B	E min.	F A/F
N2430-02-02	1/8	1/8	31.5	10.4	2.4	14
N2430-02-04	1/8	1/4	35.3	15.0	2.4	19
N2430-04-02	1/4	1/8	33.0	10.4	4.8	14
N2430-04-04	1/4	1/4	37.0	15.0	4.8	19
N2430-04-06	1/4	3/8	39.4	15.0	4.8	22
N2430-04-08	1/4	1/2	45.5	19.8	4.8	27
N2430-05-04	5/16	1/4	37.6	15.0	6.3	19
N2430-06-04	3/8	1/4	38.1	15.0	7.1	19
N2430-06-06	3/8	3/8	40.4	15.0	7.1	22
N2430-06-08	3/8	1/2	46.7	19.8	7.1	27
N2430-08-04	1/2	1/4	43.5	15.0	9.9	19
N2430-08-06	1/2	3/8	45.5	15.0	9.9	22
N2430-08-08	1/2	1/2	51.8	19.8	9.9	27
N2430-10-08	5/8	1/2	53.0	19.8	12.7	27
N2430-12-08	3/4	1/2	52.8	19.8	15.0	27
N2430-12-12	3/4	3/4	52.8	20.6	15.0	35
N2430-12-16	3/4	1	58.4	25.4	15.0	41
N2430-16-12	1	3/4	60.7	20.6	20.3	35
N2430-16-16	1	1	64.3	25.4	20.3	41
N2430-20-20	1-1/4	1-1/4	77.7	25.4	27.6	55
N2430-24-24	1-1/2	1-1/2	88.9	27.6	33.2	60