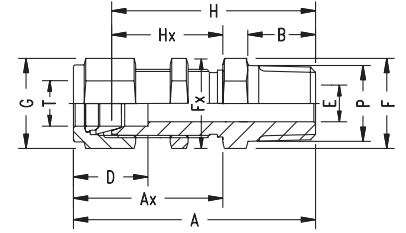


# Bulkhead Male Connector N2706

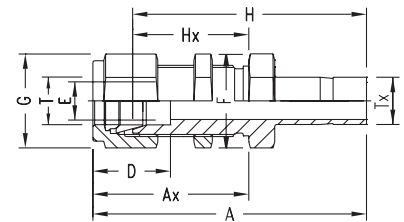
INCH OD Tubes x Male NPT Threads



Part No.	T Tube OD	P NPT Male	A	Ax	B	D	E min.	F A/F	G A/F	H	Hx	Panel Hole Drill Size	Max. Panel Thickness
N2706-02-02	1/8	1/8	46.4	31.2	9.6	12.7	2.4	14	11	39.8	24.6	8.3	12.7
N2706-04-02	1/4	1/8	49.5	33.5	9.6	15.3	4.8	16	14	42.2	26.2	11.5	10.2
N2706-04-04	1/4	1/4	54.1	33.5	14.3	15.3	4.8	16	14	46.7	26.2	11.5	10.2
N2706-06-04	3/8	1/4	57.4	36.8	14.3	16.8	7.1	19	17	50.0	29.5	14.7	11.2
N2706-06-06	3/8	3/8	57.4	36.8	14.3	16.8	7.1	19	17	50.0	29.5	14.7	11.2
N2706-06-08	3/8	1/2	63.7	36.8	19.1	16.8	7.1	22	17	56.5	29.5	14.7	11.2
N2706-08-06	1/2	3/8	63.3	41.9	14.3	22.9	9.6	24	22	53.0	31.8	19.5	12.7
N2706-08-08	1/2	1/2	68.8	41.9	19.1	22.9	10.4	24	22	58.8	31.8	19.5	12.7
N2706-12-12	3/4	3/4	76.2	47.5	19.1	24.4	15.8	30	28.5	66.9	37.4	25.8	16.8
N2706-16-16	1	1	93.2	57.4	23.9	31.2	22.3	41	38	81.0	45.2	33.7	19.0
N2706-20-20	1-1/4	1-1/4	110.5	72.5	23.9	41.2	27.6	50	50	87.5	49.5	42.5	19.0
N2706-24-24	1-1/2	1-1/2	122.8	79.1	26.2	50.0	34.0	60	57	95.5	51.5	50.5	19.0

# Bulkhead Reducer N2709

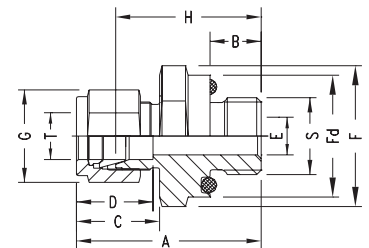
INCH OD Tubes



Part No.	T Tube OD	Tx Tube OD	A	Ax	D	E min.	F A/F	G A/F	H D	Hx	Panel Hole Drill Size	Max. Panel Thickness
N2709-02-02	1/8	1/8	49.5	31.3	12.7	2.0	11	11	43.0	24.6	8.3	12.7
N2709-04-04	1/4	1/4	55.9	33.5	15.3	4.8	16	14	48.5	26.2	11.5	10.2
N2709-06-06	3/8	3/8	60.8	36.8	16.8	7.1	19	17	53.8	29.5	14.7	11.2
N2709-08-08	1/2	1/2	72.9	41.9	22.9	9.9	24	22	62.7	31.8	19.5	12.7
N2709-10-10	5/8	5/8	75.2	42.7	23.6	12.7	27	25	65.0	32.5	22.6	12.7
N2709-16-16	1	1	100.4	57.4	31.2	20.3	35	38	88.1	45.2	33.7	19.1
N2709-20-20	1-1/4	1-1/4	120.7	69.9	41.2	27.4	50	50	89.9	47.7	41.6	19.1
N2709-24-24	1-1/2	1-1/2	127.2	76.4	50.0	33.0	60	60	100.1	49.3	49.6	19.1

# O Seal Male Connector N6400

INCH OD Tube x Male Straight Threads - UNF



Part No.	T Tube OD	S Thread Male	A	B	C	D	E min.	F A/F	Fd	G A/F	H	O Ring Part No.
N6400-02-02-0	1/8	5/16-24	32.8	8.6	15.3	12.7	2.4	14	13.8	11	26.2	1 OPU
N6400-04-04-0	1/4	7/16-20	38.4	10.4	17.8	15.3	4.8	19	18.8	14	31.0	2 OPU
N6400-05-05-0	5/16	1/2-20	40.6	11.2	18.5	16.3	6.3	22	21.8	16	33.3	3 OPU
N6400-06-06-0	3/8	9/16-18	42.4	12.0	19.3	16.8	7.1	24	23.6	17	35.0	4 OPU
N6400-08-08-0	1/2	3/4-16	46.0	12.0	21.8	22.9	10.4	28.5	28.0	22	35.8	6 OPU
N6400-12-12-0	3/4	1-1/16-12	52.4	14.3	21.8	24.4	15.8	38	37.8	28.5	42.2	12 OPU
N6400-16-16-0	1	1-5/16-12	58.2	14.3	26.4	31.2	22.3	45	44.0	38	46.0	16 OPU
N6400-20-20-0	1-1/4	1-5/8-12	76.2	18.3	38.9	41.4	27.6	55	54.0	50	54.1	20 OPU
N6400-24-24-0	1-1/2	1-7/8-12	86.6	19.8	45.2	50.0	34.0	60	58.0	57	59.4	24 OPU