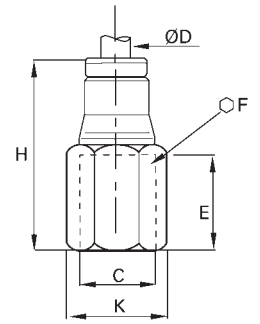


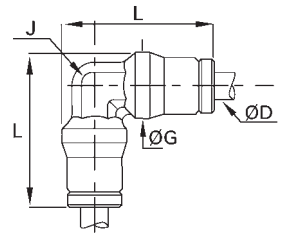
Female Connector – Fractional Inch Tube To NPT

ØD in	C NPT	Cat. No.	E in	F mm	H in	K in	Scale oz
5/32	1/8	PCNB2405-02.5-02	.37	14	.98	.59	.60
5/32	1/4	PCNB2405-02.5-04	.55	17	1.16	.73	1.02
1/4	1/8	PCNB2405-04-02	.37	14	1.10	.59	.55
1/4	1/4	PCNB2405-04-04	.55	17	1.28	.73	1.15
3/8	1/4	PCNB2405-06-04	.55	17	1.50	.73	1.32
3/8	3/8	PCNB2405-06-06	.55	22	1.50	.94	1.97
1/2	3/8	PCNB2405-08-06	.55	22	1.52	.94	2.42
1/2	1/2	PCNB2405-08-08	.73	24	1.67	1.02	2.42



Union Elbow – Fractional Inch Tube To Tube

ØD in	Cat. No.	G in	J in	L in	Scale oz
5/32	PCNB2500-02.5-02.5	.39	.28	.91	.37
1/4	PCNB2500-04-04	.49	.32	1.12	.60
5/16	PCNB2500-05-05	.59	.39	1.22	.81
3/8	PCNB2500-06-06	.67	.47	1.48	1.39
1/2	PCNB2500-08-08	.79	.59	1.61	1.71



Male Elbow – Fractional Inch Tube To NPT

ØD in	C NPT	Cat. No.	E in	F mm	G in	H in	J in	K in	L in	Scale oz
5/32	1/8	PCNB2501-02.5-02	.30	13	.39	.59	.28	.47	.71	.47
5/32	1/4	PCNB2501-02.5-04	.43	14	.39	.67	.28	.59	.71	.71
1/4	1/8	PCNB2501-04-02	.30	13	.49	.69	.32	.47	.87	.62
1/4	1/4	PCNB2501-04-04	.43	14	.49	.75	.32	.59	.87	.81
1/4	3/8	PCNB2501-04-06	.45	18	.49	.75	.32	.77	.87	1.12
3/8	1/8	PCNB2501-06-02	.30	13	.67	.93	.47	.47	1.14	1.29
3/8	1/4	PCNB2501-06-04	.43	15	.67	.93	.47	.63	1.14	1.40
3/8	3/8	PCNB2501-06-06	.45	18	.67	1.02	.47	.77	1.14	1.57
3/8	1/2	PCNB2501-06-08	.59	22	.67	1.06	.47	.94	1.14	2.27
1/2	1/4	PCNB2501-08-04	.43	15	.79	1.14	.59	.63	1.22	1.65
1/2	3/8	PCNB2501-08-06	.45	18	.79	1.14	.59	.77	1.22	1.90
1/2	1/2	PCNB2501-08-08	.59	22	.79	1.14	.59	.94	1.22	2.41

