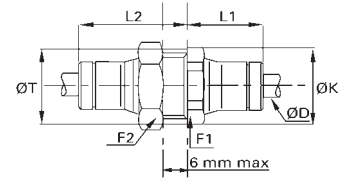


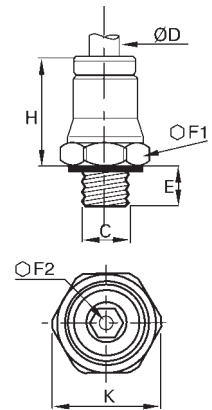
## Bulkhead Connector – Fractional Inch Tube To Tube

ØD in	Cat. No.	F1 mm	F2 mm	K in	L1 in	L2 in	T in	Scale oz
5/32	PCNB2700-02.5-02.5	13	14	.55	.55	.79	.49	.69
1/4	PCNB2700-04-04	16	17	.69	.67	.89	.59	1.00
5/16	PCNB2700-05-05	18	19	.77	.73	.93	.67	1.27
3/8	PCNB2700-06-06	22	27	.95	.87	1.10	.85	2.22
1/2	PCNB2700-08-08	24	24	1.02	.89	1.14	1.04	2.97



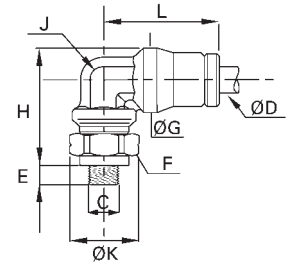
## Male Connector – Fractional Inch Tube To UNF

ØD in	C UNF	Cat. No.	E in	F1 mm	F2 mm	H in	K in	Scale oz
5/32	10-32	PCNB6400-02.5-10/32-0	.13	10	2.5	.63	.43	.28
1/4	10-32	PCNB6400-04-10/32-0	.13	13	2.5	.79	.55	.35



## Male Elbow – Fractional Inch Tube To UNF

ØD in	C UNF	Cat. No.	E in	F mm	G in	H in	J in	K in	L in	Scale oz
5/32	10-32	PCNB6801-02.5-10/32-0	.13	10	.39	.71	.28	.43	.71	.39



## Male Branch Tee – Fractional Inch Tube To UNF To Tube

ØD in	C UNF	Cat. No.	E in	F mm	G in	H in	J in	K in	L in	Scale oz
5/32	10-32	PCNB6803-02.5-10/32-0	.13	10	.39	1.00	.28	.47	.71	.69

