

Cam and Groove

Dixon Type D Cam and Groove Couplers



Female Coupler
x
Female NPT

SAFETY
ALERT

Size	356T6 Aluminum		Aluminum Hard Coat		Brass	
	Part #	Price/E	Part #	Price/E	Part #	Price/E
1/2"	50-D-AL	\$21.00	---	---	50-D-BR	\$36.50
3/4"	75-D-AL	21.35	---	---	75-D-BR	40.85
1"	100-D-AL	21.60	---	---	100-D-BR	45.50
1 1/4" ²	125-D-AL ³	38.90	---	---	125-D-BR ³	73.20
1 1/2"	150-D-AL	27.95	150-D-ALH	\$41.85	150-D-BR	61.70
2"	200-D-AL	30.20	200-D-ALH	46.85	200-D-BR	76.70
2 1/2" ²	250-D-AL ³	50.75	---	---	250-D-BR ³	120.50
3"	300-D-AL	49.05	300-D-ALH	72.25	300-D-BR	144.00
4"	400-D-AL	69.60	400-D-ALH	105.90	400-D-BR	214.00
5"	500-D-AL	123.90	---	---	500-D-BR	438.00
6"	600-D-AL	163.20	600-D-ALH	236.00	600-D-BR	549.20
8" ¹	800-D-AL	722.45	---	---	---	---

¹ Dixon and Boss-Lock cam and groove couplings **do not** interchange in the 8" size. The 8" Dixon design has 4 cam arms.

² See Boss-Lock for 1 1/4" and 2 1/2" couplers.

³ Parts are manufactured in Canada.

Boss-Lock Type D Cam and Groove Couplers



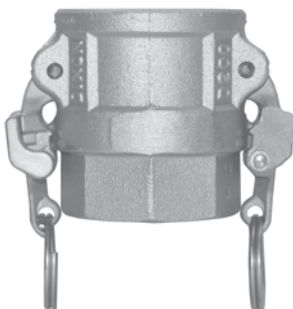
Female Coupler
x
Female NPT

SAFETY
ALERT

Size	356T6 Aluminum		Brass	
	Part #	Price/E	Part #	Price/E
3/4" x 1/2"	AD050	\$39.30	BD050	\$56.00
3/4"	AD075	32.45	BD075	56.60
1"	AD100	34.50	BD100	60.30
1 1/4"	AD125	36.75	BD125	71.50
1 1/2"	AD150	35.95	BD150	72.60
2"	AD200	37.85	BD200	87.30
2 1/2"	AD250	49.05	BD250	142.10
3"	AD300	54.85	BD300	161.25
4"	AD400	78.55	BD400	213.70
5"	AD500	131.50	---	---
6"	AD600	191.35	BD600	585.00
8" ¹	AD800	506.45	---	---

¹ Dixon and Boss-Lock cam and groove couplings **do not** interchange in the 8" size. The 8" Boss-Lock design has 2 cam arms.

EZ Boss-Lock Type D Cam and Groove Couplers



Female Coupler
x
Female NPT

SAFETY
ALERT

Size	356T6 Aluminum		Brass	
	Part #	Price/E	Part #	Price/E
3/4" x 1/2"	---	---	---	---
3/4"	AD075EZ	\$65.10	BD075EZ	\$105.00
1"	AD100EZ	67.50	BD100EZ	106.40
1 1/4"	---	---	BD125EZ	132.10
1 1/2"	AD150EZ	71.10	BD150EZ	121.05
2"	AD200EZ	72.00	BD200EZ	133.00
2 1/2"	AD250EZ	84.70	BD250EZ	148.80
3"	AD300EZ	114.95	BD300EZ	232.65
4"	AD400EZ	132.25	BD400EZ	292.10
5"	AD500EZ	186.50	---	---
6"	AD600EZ	287.00	---	---
8" ¹	AD800EZ	516.00	---	---

¹ Dixon and Boss-Lock cam and groove couplings **do not** interchange in the 8" size. The 8" EZ Boss-Lock design has 2 cam arms.