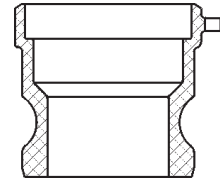


## Dixon Adapters for Welding

### Socket Weld to Schedule 40 Pipe

Size	Bore	Aluminum		Stainless Steel	
		Part #	Price/E	Part #	Price/E
¾"	1.065	---	---	75AWSPSS	\$92.20
1"	1.330	---	---	100AWSPSS	97.95
1½"	1.915	150AWSPAL	\$47.30	150AWSPSS	109.20
2"	2.390	200AWSPAL	42.60	200AWSPSS	102.90
3"	3.530	300AWSPAL	54.70	300AWSPSS	174.55
4"	4.530	400AWSPAL	71.85	400AWSPSS	261.55
5"	5.593	500AWSPAL	107.30	500AWSPSS	437.10
6"	6.655	600AWSPAL	124.85	600AWSPSS	443.70
8" DIX*	8.711	800AWSPAL	441.70	---	---
8" BL*	8.711	801AWSPAL	420.60	---	---

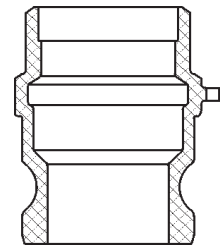


\* Dixon and Boss-Lock Cam and Groove Couplings **do not interchange in the 8" size.**



### Butt Weld to Schedule 40 Pipe / Socket Weld to Nominal O.D. Tubing

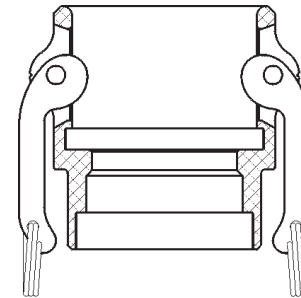
Size	Bore	Aluminum		Stainless Steel	
		Part #	Price/E	Part #	Price/E
¾"	.765	---	---	75AWBPSTSS	\$92.20
1"	1.015	---	---	100AWBPSTSS	97.95
1½"	1.515	150AWBPSTAL	\$47.50	150AWBPSTSS	109.20
2"	2.015	200AWBPSTAL	35.50	200AWBPSTSS	102.90
3"	3.015	300AWBPSTAL	53.35	300AWBPSTSS	174.55
4"	4.015	400AWBPSTAL	71.85	400AWBPSTSS	261.55
5"	5.015	500AWBPSTAL	107.30	500AWBPSTSS	437.10
6"	6.020	600AWBPSTAL	124.85	600AWBPSTSS	443.70
8" BL*	8.035	801AWBPSTAL	420.60	---	---



## Dixon Couplers for Welding

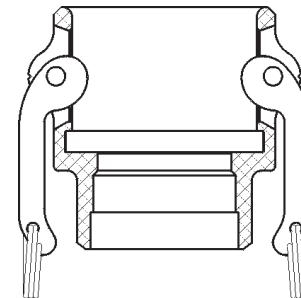
### Socket Weld to Schedule 40 Pipe

Size	Bore	Aluminum		Stainless Steel	
		Part #	Price/E	Part #	Price/E
¾"	1.065	---	---	75DWSPSS	\$134.95
1"	1.330	100DWSPAL	POR	100DWSPSS	121.90
1½"	1.915	150DWSPAL	\$56.10	150DWSPSS	142.85
2"	2.390	200DWSPAL	67.30	200DWSPSS	143.55
3"	3.530	300DWSPAL	68.00	300DWSPSS	251.70
4"	4.530	400DWSPAL	83.30	400DWSPSS	328.40
5"	5.593	500DWSPAL	197.00	500DWSPSS	640.00
6"	6.655	600DWSPAL	219.20	600DWSPSS	723.25
8"	8.711	800DWSPAL	911.00	---	---



### Butt Weld to Schedule 40 Pipe / Socket Weld to Nominal O.D. Tubing

Size	Bore	Aluminum		Stainless Steel	
		Part #	Price/E	Part #	Price/E
¾"	.765	---	---	75DWBPSTSS	\$116.95
1"	1.015	---	---	100DWBPSTSS	121.90
1½"	1.515	150DWBPSTAL	\$56.10	150DWBPSTSS	142.80
2"	2.015	200DWBPSTAL	53.35	200DWBPSTSS	143.55
3"	3.015	300DWBPSTAL	64.90	300DWBPSTSS	251.70
4"	4.015	400DWBPSTAL	85.25	400DWBPSTSS	330.00
5"	5.015	500DWBPSTAL	161.25	---	---
6"	6.020	600DWBPSTAL	219.10	RDWBPST600EZ	517.70
8"	8.035	---	---	---	---



*Not all configurations are stocked.*

EZ Boss-Lock versions are also available. Consult the factory for pricing and availability.

**Note:** Line drawings are for reference only. Consult the factory for specific dimensions.

Final weld preparation, as with all weld fittings, is the responsibility of the welder.