



A  
Cam &  
Groove

## Dry Quick Disconnects

### Dry Aviation Couplings

Dry Aviation Couplings are designed for use in aviation and military refueling systems. Manufactured to accept the international standard 2½" point bayonet, hose end refueling nozzles according to: ISO45 / MS24484 / STANAG 3105 / British Aerospace Spec. 2C14. **They are not configured for under-wing refueling.**

#### Technical Information:

- Body: high strength aluminum
- Coupling ring: gunmetal
- Bayonet flange and inner parts: stainless steel, aluminum
- All wetted parts are in aluminum and stainless steel
- **150 PSI** working pressure
- Caps and plugs in composite (Polyeten PE-HD 300) provide a very good protection against corrosion, and withstand both hot and cold environments

### Aviation Couplers (Hose Unit)

#### Couplers:

- High strength aluminum body
- All wetted parts are aluminum and stainless steel
- Electrically conductive, weather resistant rubber protective ring
- Stainless steel ball bearings
- Gunmetal coupling ring minimizes the risk of seizure
- Stainless steel shaft journal embedded in PTFE (Teflon®) to eliminate seizure
- PTFE (Teflon®) bearings between the driving plate and the piston guide eliminate the risk of seizure
- Riveted piston pin minimizes the risk of failure under extreme pressure conditions



coupler x female NPT



#### Aviation Couplers x Female NPT with Viton® seals

Female NPT	Body Size	Aluminum	
		Part #	Price/E
2½"	ISO 45	<b>DAC250AL</b>	<b>\$2000.75</b>
3"	ISO 45	<b>DAC300AL</b>	<b>2000.75</b>

#### Aviation Couplers x Female BSP with Viton® seals

Female BSP	Body Size	Aluminum	
		Part #	Price/E
2½"	ISO 45	<b>DAC250ALBSP</b>	<b>\$2000.75</b>
3"	ISO 45	<b>DAC300ALBSP</b>	<b>2000.75</b>

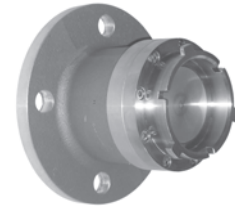
### Aviation Adapters (Tank Unit)

#### Adapters:

- High strength aluminum body
- Inner parts are stainless steel
- PTFE (Teflon®) bearings between the piston shaft and the piston guide eliminate the risk of seizure
- Conical valve seat eliminates the risk of "piston blow out" when extreme pressure is used



adapter x female NPT



adapter x 150# ASA flange

#### Aviation Adapters x Female NPT with Viton® seals

Female NPT	Body Size	Aluminum	
		Part #	Price/E
2½"	ISO 45	<b>DAA250AL</b>	<b>\$1183.50</b>
3"	ISO 45	<b>DAA300AL</b>	<b>1183.50</b>

#### Aviation Adapters x 150# ASA Flange with Viton® seals

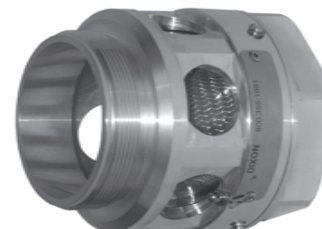
150# Flange	Body Size	Aluminum	
		Part #	Price/E
2½"	ISO 45	<b>DAA250ALFL</b>	<b>\$1373.40</b>
3"	ISO 45	<b>DAA300ALFL</b>	<b>1373.40</b>

Also available with 4" TTMA flange

### Aviation Aluminum Sight Flow Indicator with Filter / Screen

- Sight flow indicator with male BSP thread screws into aviation coupler with female BSP thread
- Filter / screen can be inspected through the sight glass
- Filter / screen is easily removed if cleaning is required
- Screen is 100 mesh

Female Thread	Male Thread	Part #	Price/E
2½" NPT	2½" BSP	<b>ASFI25T25B</b>	<b>\$1217.00</b>
3" NPT	3" BSP	<b>ASFI30T30B</b>	<b>1217.00</b>
2½" NPT	2½" NPT	<b>ASFI25T25T</b>	<b>1217.00</b>
3" NPT	3" NPT	<b>ASFI30T30T</b>	<b>1217.00</b>



### Composite Dust Cap for Adapters

Size	Body Size	Part #	Price/E
2½"	ISO45	<b>DADC250</b>	<b>\$169.60</b>



### Composite Dust Plug for Couplers

Size	Body Size	Part #	Price/E
2½"	ISO45	<b>DADP250</b>	<b>\$247.60</b>

