

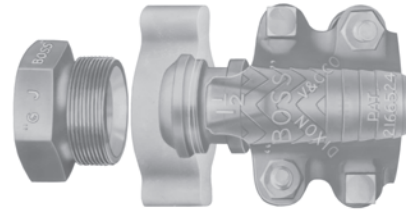
## Boss Couplings

### Boss Ground Joint Seal

#### Positive Metal-to-Polymer Seal

- A leakproof seal is formed when the metal head of the stem makes contact with the patented polymer seat in the spud.
- The non-metallic polymer seat resists most chemicals found in manufacturing facilities (reference corrosion resistance chart on pages 512-517).
- Recommended for steam service up to **450°F**
- Easy to seal
- Works with existing ground joint fittings
- *Plated steel and/or iron*
- Use with Boss clamps found on pages 88 and 89.

**SAFETY**  
ALERT



**C**  
Boss  
Fittings



**Complete Female**



**Stem**



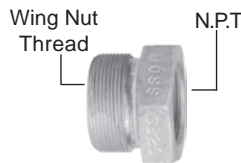
**Wing Nut**

Hose Shank x NPT	Complete Female		Stem			Wing Nut		
	Part #	Price/E	Part #	Price/E	Pkg Qty	Part #	Price/E	Pkg Qty
1/4" *	<b>GF1</b>	<b>\$41.75</b>	<b>GBA</b>	<b>\$15.95</b>	100	<b>BA2</b>	<b>\$9.85</b>	100
3/8" *	<b>GF3</b>	<b>35.05</b>	<b>GCA</b>	<b>7.25</b>	100	<b>CB</b>	<b>9.70</b>	100
1/2"	<b>GF6</b>	<b>27.45</b>	<b>GB1</b>	<b>6.25</b>	100	<b>B2</b>	<b>5.70</b>	100
3/4"	<b>GF26</b>	<b>33.40</b>	<b>GB6</b>	<b>12.40</b>	50	<b>B12</b>	<b>7.55</b>	25
1"	<b>GF36</b>	<b>34.45</b>	<b>GB11</b>	<b>12.90</b>	50	<b>B12</b>	<b>7.55</b>	25
1-1/4"	<b>GF51</b>	<b>61.10</b>	<b>GB16</b>	<b>18.85</b>	25	<b>B17</b>	<b>13.45</b>	25
1-1/2"	<b>GF61</b>	<b>56.95</b>	<b>GB21</b>	<b>16.90</b>	25	<b>B17</b>	<b>13.45</b>	25
2"	<b>GF81 **</b>	<b>66.95</b>	<b>GB26 **</b>	<b>18.65</b>	10	<b>B27</b>	<b>21.90</b>	10
2-1/2"	<b>GF96</b>	<b>179.40</b>	<b>GB31</b>	<b>46.15</b>	5	<b>B32</b>	<b>56.60</b>	5
3"	<b>GF111</b>	<b>186.70</b>	<b>GB36</b>	<b>55.05</b>	5	<b>B37</b>	<b>48.85</b>	5
4"	<b>GF141</b>	<b>422.30</b>	<b>GB46</b>	<b>130.40</b>	5	<b>B47</b>	<b>142.85</b>	5
6" *	<b>GF201</b>	<b>1038.20</b>	<b>GB66</b>	<b>316.80</b>	2	<b>B67</b>	<b>219.40</b>	2

\* 1/4", 3/8" and 6" come only with copper seat spuds

\*\* Not to be used with #250, #275 or #306 Boss clamps

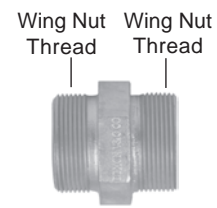
**SAFETY**  
ALERT



**Female Spud**



**Male Spud**



**Double Spud**

Thread	Part #	Price/E	Pkg Qty	Part #	Price/E	Part #	Price/E
1/4" *	<b>GBC</b>	<b>\$15.95</b>	100	---	---	---	---
3/8" *	<b>GCC</b>	<b>18.10</b>	100	<b>GMC</b>	<b>\$16.55</b>	---	---
1/2"	<b>GB3</b>	<b>15.50</b>	100	<b>GM3</b>	<b>19.30</b>	<b>GDB3</b>	<b>\$31.95</b>
3/4"	<b>GB8</b>	<b>13.45</b>	50	<b>GM8</b>	<b>18.40</b>	<b>GDB13</b>	<b>31.05</b>
1"	<b>GB13</b>	<b>14.00</b>	50	<b>GM13</b>	<b>19.30</b>	<b>GDB13</b>	<b>31.05</b>
1-1/4"	<b>GB18</b>	<b>28.80</b>	25	<b>GM18</b>	<b>44.00</b>	<b>GDB23</b>	<b>53.25</b>
1-1/2"	<b>GB23</b>	<b>26.60</b>	25	<b>GM23</b>	<b>42.40</b>	<b>GDB23</b>	<b>53.25</b>
2"	<b>GB28</b>	<b>26.40</b>	10	<b>GM28</b>	<b>44.60</b>	<b>GDB28</b>	<b>54.55</b>
2-1/2"	<b>GB33</b>	<b>76.65</b>	5	<b>GM33</b>	<b>109.70</b>	<b>GDB33</b>	<b>114.25</b>
3"	<b>GB38</b>	<b>82.80</b>	5	<b>GM38</b>	<b>115.80</b>	<b>GDB38</b>	<b>119.75</b>
4"	<b>GB48</b>	<b>149.05</b>	5	---	---	---	---
6" *	<b>GB68</b>	<b>502.00</b>	2	---	---	---	---

Boss couplings and the steam quick disconnects on page 82 are the only Dixon couplings recommended for steam service.

**SAFETY**  
ALERT