

Boss Couplings

Boss Clamps

Hose I.D.	Hose O.D.		Plated Iron		Qty	Torque
	From:	To:	Part #	Price/E		
3"	4-16/64"	4-52/64"	BS39	\$184.60	2	150
4"	4-40/64"	5"	B45	188.80	2	150
4"	4-56/64"	5-16/64"	BS49	287.25	2	200
4"	5-16/64"	5-38/64"	BU49	357.30	2	200
4"	5-34/64"	5-60/64"	B49	343.20	2	200
6"	6-56/64"	7-24/64"	750	345.00	1	200
6"	7-32/64"	8"	850	345.00	1	200



C
Boss
Fittings

Three Piece
6-Bolt Type

- Replacement nuts and bolts are available, contact the factory for more information.
- The bolts used in the Boss interlocking clamps are not standard bolts. They vary from standard bolts in their length, diameter, overall thread length and material hardness. These bolts can be retorqued, but it is **not** recommended that they be reused, as they are designed for a single bend only. Dixon recommends using only factory supplied replacement bolts.
- Torque values for clamps are based on dry bolts. The use of lubricant on bolts will adversely effect clamp performance. *Do not lubricate nuts and bolts.*
- See page 519 for Fraction to Decimal conversion chart.
- Recommended torque rating in ft. lbs.

SAFETY
ALERT

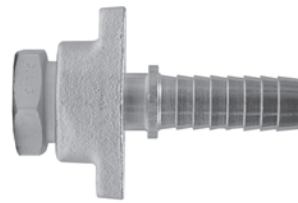
SAFETY
ALERT

SAFETY
ALERT

Optional Pkg./Box Quantity Shown

Ground Joint Air Hammer Couplings

Ground Joint Type - rounded steel head of stem fits concave inserts in spuds for superior sealing. Use with Boss clamp.



Complete Female



Plated Steel
Stem



Iron
Wing Nut

Style	Hose I.D. & NPT Sizes	Coarse Nut Thread	Part #	Price/E	Part #	Price/E	Part #	Price/E
Compact	1/2"	1-31/64" O.D. x 8 T.P.I.	GDF6	\$34.70	GBA45	\$10.70	J47	\$7.90
	3/4"		GDF8	37.20	GBA46	11.70	J47	7.90
Heavy	3/4"	1-47/64" O.D. x 8 T.P.I.	GDF10	\$48.20	GBB18	\$16.25	DLB12	\$11.30
	1"		GDF12	44.10	GBB11	14.15	DLB12	11.30



Plated Steel w/ Copper Seat
Female Spud



Plated Steel w/ Copper Seat
Male Spud



Plated Steel w/ Copper Seat
Double Spud

Style	NPT Sizes	Coarse Spud Thread	Part #	Price/E	Part #	Price/E	Part #	Price/E
Compact	1/2"	1-31/64" O.D. x 8 T.P.I.	GJ65	\$16.10	GJ60	\$22.35	GJ75	\$26.90
	3/4"		GJ55	17.60	GJ50	20.35	GJ75	26.90
Heavy	3/4"	1-47/64" O.D. x 8 T.P.I.	GDL8	\$20.65	GDL7	\$27.55	GDL25	\$27.75
	1"		GDL13	18.65	GDL10	25.15	GDL25	27.75