



Air Fittings and Accessories

Dual Lock Quick-Acting Couplings with Ferrule

- Dual Lock couplings with ferrules are rated to **300 PSI** working pressure.
- Yellow zinc coated coupling with plated steel ferrule.
- Also available in brass and stainless steel.
- For crimp recommendations see page 542.

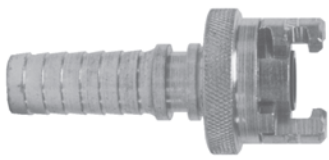



Body Size	Hose ID	Hose O.D.		Part #	Price/E
		From:	To:		
1/2"	1/2"	5/4/64"	1-2/64"	PHL8WF	\$37.75
1/2"	3/4"	1-10/64"	1-22/64"	PHL12WF	39.50

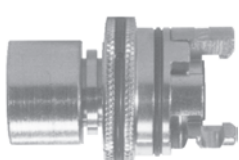
D
Air Fittings

Dual Lock Quick-Acting Couplings with Knurled Flanged Sleeve

Large, raised collar sleeve permits easier handling when wearing gloves. Zinc coated.

Hose End Barb with Knurled Flanged Sleeve	Body Size	Hose ID Size	Part #	Price/E	Pkg Qty
	1/2"	3/8"	PHL6FS	\$34.78	25
	1/2"	1/2"	PHL8FS	34.78	25
	1/2"	3/4"	PHL12FS	36.53	25

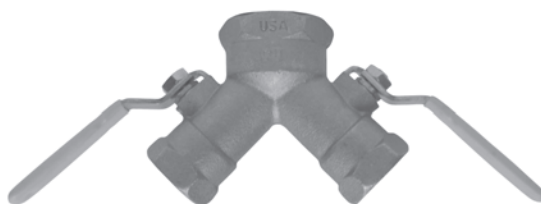
Male Pipe Thread with Knurled Flanged Sleeve	Body Size	NPT Thread Size	Part #	Price/E	Pkg Qty
	1/2"	3/8"	PML6FS	\$33.59	25
	1/2"	1/2"	PML8FS	32.92	25
	1/2"	3/4"	PML12FS	32.92	25

Female Pipe Thread with Knurled Flanged Sleeve	Body Size	NPT Thread Size	Part #	Price/E	Pkg Qty
	1/2"	1/2"	PFL8FS	\$37.20	25
	1/2"	3/4"	PFL12FS	37.20	25

Optional Pkg./Box Quantity Shown

Dual Y Valves

Dual action valve, ideal for compressor applications.



Non-Vented				Vented			
Female NPT Inlet (1)	Female NPT Outlet (2)	Brass		Female NPT Inlet (1)	Female NPT Outlet (2)	Brass	
		Part #	Price/E			Part #	Price/E
1"	3/4"	BBV100DW	\$112.10	1"	3/4"	BBV100DWV	\$112.10
1 1/4"	3/4"	BBV125DW	112.10	1 1/4"	3/4"	BBV125DWV	112.10

Maximum working pressure: **600 PSI** WOG (Water, Oil, Gas)

Maximum working pressure: **125 CWP** (Cold Working Pressure)