

Legris D.O.T. Push-In Fittings

Materials:

- All threaded bases are NPTF threaded brass
- Bodies are glass reinforced nylon 12
- Seals are low temperature Buna-N

Working Pressure: vacuum to **275 PSI** at ambient temp.

SAFETY ALERT Maximum circuit pressure depends equally on the type and diameter of the tube used.

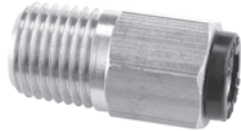
Working Temperature: -40°F to 225°F

Suitable Fluids: Compressed air only.
Lubricated or non-lubricated

Compatible Tubing: Tubing used should be that specified in SAE J844 (Oct. 1980) which also meets NHTSA FMVSS 106. These fittings are designed for use on all pneumatic circuits other than air brake assemblies between the frame and axle or between towed and towing vehicle.

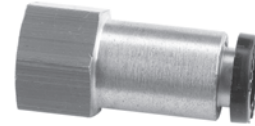
Meets the new DOT 2008 standard and the SAEJ2494 standard

D
Air
Fittings



Straight Male Connectors
(tube to male NPTF)

Tube O.D.	Male NPTF	Part #	Price/E	Pkg Qty
5/32"	1/8"	31150411DOT	\$3.40	10
5/32"	1/4"	31150414DOT	5.50	10
3/16"	1/8"	31155511DOT	4.40	10
3/16"	1/4"	31155514DOT	6.65	10
1/4"	1/8"	31155611DOT	3.90	10
1/4"	1/4"	31155614DOT	4.00	10
1/4"	3/8"	31155618DOT	5.60	10
3/8"	1/8"	31156011DOT	7.70	10
3/8"	1/4"	31156014DOT	5.95	10
3/8"	3/8"	31156018DOT	7.55	10
3/8"	1/2"	31156022DOT	10.95	10
1/2"	1/4"	31156214DOT	10.30	10
1/2"	3/8"	31156218DOT	10.45	10
1/2"	1/2"	31156222DOT	10.60	10



Straight Female Connectors
(tube to female NPTF)

Tube O.D.	Female NPTF	Part #	Price/E	Pkg Qty
5/32"	1/8"	31140411DOT	\$6.20	10
3/16"	1/8"	31145511DOT	6.60	10
1/4"	1/8"	31145611DOT	8.35	10
1/4"	1/4"	31145614DOT	8.05	10
3/8"	1/4"	31146014DOT	10.95	10
3/8"	3/8"	31146018DOT	14.80	10



Male Elbows
(tube to male NPTF)

Tube O.D.	Male NPTF	Part #	Price/E	Pkg Qty
5/32"	1/8"	31090411DOT	\$7.10	10
3/16"	1/8"	31095511DOT	7.90	10
1/4"	1/8"	31095611DOT	4.70	10
1/4"	1/4"	31095614DOT	5.70	10
1/4"	3/8"	31095618DOT	13.25	10
3/8"	1/4"	31096014DOT	12.05	10
3/8"	3/8"	31096018DOT	14.15	10
3/8"	1/2"	31096022DOT	13.25	10
1/2"	1/4"	31096214DOT	14.35	10
1/2"	3/8"	31096218DOT	14.20	10
1/2"	1/2"	31096222DOT	17.35	10

Note: This fitting orientates 360° on its threaded base.



Male Branch Tees
(tube to male NPTF to tube)

Tube O.D.	Male NPTF	Part #	Price/E	Pkg Qty
5/32"	1/8"	31080411DOT	\$9.25	10
5/32"	1/4"	31080414DOT	12.05	10
3/16"	1/8"	31085511DOT	10.95	10
1/4"	1/8"	31085611DOT	6.90	10
1/4"	1/4"	31085614DOT	7.55	10
1/4"	3/8"	31085618DOT	13.60	10
3/8"	1/4"	31086014DOT	12.20	10
3/8"	3/8"	31086018DOT	15.30	10
3/8"	1/2"	31086022DOT	16.00	10
1/2"	1/4"	31086214DOT	19.55	10
1/2"	3/8"	31086218DOT	19.35	10
1/2"	1/2"	31086222DOT	22.20	10

Note: This fitting orientates 360° on its threaded base.