



## Filters, Regulators and Lubricators

### Series 1 Combination Units



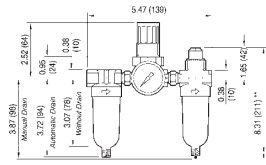
#### Mini - Transparent Bowl

Automatic Drain

Manual Drain

Size	Part #	SCFM	Price/E	Size	Part #	SCFM	Price/E
1/8"	<b>P1A-100A</b>	10	<b>\$215.60</b>	1/8"	<b>P1A-100M</b>	10	<b>\$207.75</b>
1/4"	<b>P1A-200A</b>	10	<b>216.50</b>	1/4"	<b>P1A-200M</b>	10	<b>208.65</b>

1 oz. reservoir



\*\* minimum clearance required to remove bowl

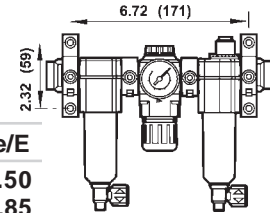
**D**  
Air Fittings

#### 1/4" Basic - Transparent Bowl

Automatic Drain

Manual Drain

Size	Part #	SCFM	Price/E	Size	Part #	SCFM	Price/E
1/4"	<b>E72-2A</b>	36	<b>\$394.80</b>	1/4"	<b>E72-2M</b>	36	<b>\$348.50</b>
3/8"	<b>E72-3A</b>	36	<b>404.00</b>	3/8"	<b>E72-3M</b>	36	<b>357.85</b>



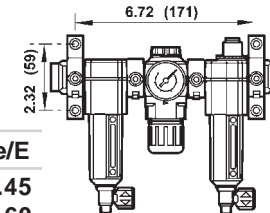
Transparent bowl pictured

#### 1/4" Basic - Metal Bowl with Sight Glass

Automatic Drain

Manual Drain

Size	Part #	SCFM	Price/E	Size	Part #	SCFM	Price/E
1/4"	<b>E72-2A-MB</b>	36	<b>\$421.75</b>	1/4"	<b>E72-2M-MB</b>	36	<b>\$375.45</b>
3/8"	<b>E72-3A-MB</b>	36	<b>430.80</b>	3/8"	<b>E72-3M-MB</b>	36	<b>384.60</b>



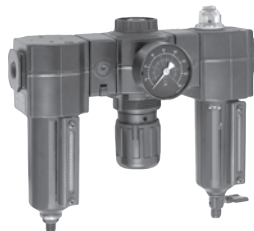
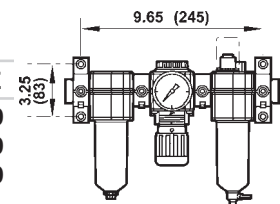
- Connected modularly
- Includes 2 clamp and wall mounting brackets #4214-52, 2 clamps #4214-51 and 2 NPT pipe adapters. See modular components on pages 200-201 for other options.
- 2 oz. reservoir
- Adjustable **5-150 PSI**
- Inlet pressure for transparent bowl is **150 PSI**
- Inlet pressure for metal bowl is **250 PSI** maximum

#### 3/8" Basic - Transparent Bowl

Automatic Drain

Manual Drain

Size	Part #	SCFM	Price/E	Size	Part #	SCFM	Price/E
1/4"	<b>E73-2A</b>	70	<b>\$524.25</b>	1/4"	<b>E73-2M</b>	70	<b>\$466.70</b>
3/8"	<b>E73-3A</b>	70	<b>524.25</b>	3/8"	<b>E73-3M</b>	70	<b>466.70</b>
1/2"	<b>E73-4A</b>	70	<b>524.25</b>	1/2"	<b>E73-4M</b>	70	<b>466.70</b>



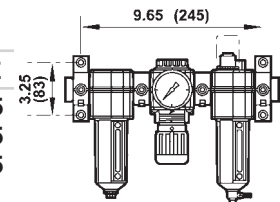
Metal bowl pictured

#### 3/8" Basic - Metal Bowl with Sight Glass

Automatic Drain

Manual Drain

Size	Part #	SCFM	Price/E	Size	Part #	SCFM	Price/E
1/4"	<b>E73-2A-MB</b>	70	<b>\$531.50</b>	1/4"	<b>E73-2M-MB</b>	70	<b>\$474.15</b>
3/8"	<b>E73-3A-MB</b>	70	<b>531.50</b>	3/8"	<b>E73-3M-MB</b>	70	<b>474.15</b>
1/2"	<b>E73-4A-MB</b>	70	<b>531.50</b>	1/2"	<b>E73-4M-MB</b>	70	<b>474.15</b>



- Connected modularly
- Includes 2 clamp and wall mounting brackets #4314-52, 2 clamps #4314-51 and 2 NPT pipe adapters. See modular components on pages 200-201 for other options.
- 2 oz. reservoir
- Adjustable **5-150 PSI**
- Inlet pressure for transparent bowl is **150 PSI**
- Inlet pressure for metal bowl is **250 PSI** maximum