



Clamps

Band Clamp Tools

- Lightweight
- Side-entry

Jack type

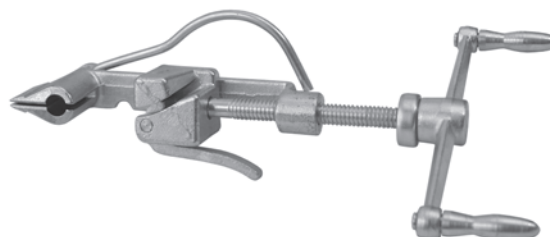
Description	Part #	Price/E
Clamping tool for band and buckles	C2	\$388.50



- For vise applications *only*

Screw action type

Description	Part #	Price/E
Clamping tool for band and buckles	51960	\$131.25

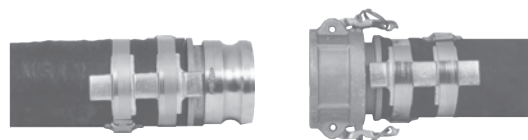


Description	Part #	Price/E
51960 adapter for installing preformed clamps	51970	\$105.00



Strap-Grip Saddles and Male Stems

Strap-Grip saddles are designed to provide greater resistance to end pull than conventional band clamps alone. Only the fittings shown below are designed for use with Strap-Grip saddles. Saddles are designed for use with 3/4" or 5/8" wide bands. A band clamp should first be applied to O.D. to seal the hose in sizes 3" and over. Then Strap-Grip saddles should be banded on top of initial clamps to anchor the fitting in the hose.



When using with Cam and Groove fittings see page 52.



Saddles only



Male NPT x Hose Shank

Size	Hose O.D. Range		Plated Iron Part #	Price ¹
	From:	To:		
1½"	1-13/16"	2-1/8"	SGS150	\$12.50
2"	2-5/8"	3"	SGS200	14.65
3"	3-1/2"	3-7/8"	SGS300	18.40
4"	4-9/16"	5-1/8"	SGS400	21.25
6"	6-1/2"	7-1/16"	SGS600	37.20
8"	8-5/8"	9-3/8"	SGS800	42.30

¹ Prices are for two saddles.

² Tubular steel

³ Schedule 80 stems meet NFPA 58

Size	Schedule 40				Schedule 80 ³	
	Plated Carbon Steel		Stainless Steel		Plated Carbon Steel	
	Part #	Price/E	Part #	Price/E	Part #	Price/E
1½"	LP21	\$52.20	---	---	LP21-80	\$59.50
2"	LP26	44.90	---	---	LP26-80	62.15
3"	LP36	110.25	RLP36 ²	\$212.00	---	---
4"	LP46	140.00	RLP46 ²	350.00	---	---
6"	LP66	299.50	---	---	---	---
---	---	---	---	---	---	---

H
Clamps