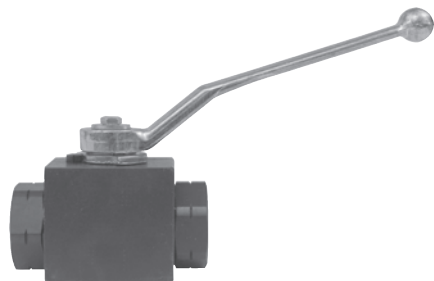




Hydraulic Fittings

High Pressure Full-Bore Ball Valves



- Blow out proof stem
- Rugged construction
- Viton® shaft seals
- Female NPTF
- Also available in SAE ORB thread


NPT Size	Carbon Steel			Stainless Steel		
	Part #	Price / E	PSI	Part #	Price / E	PSI
1/4"	HPBV25	\$54.30	7350	HPBV25SS	\$296.75	7250
3/8"	HPBV38	57.35	7350	HPBV38SS	363.25	7250
1/2"	HPBV12	62.25	7350	HPBV12SS	386.25	7250
3/4"	HPBV34	123.45	5880	HPBV34SS	758.00	5800
1"	HPBV10	147.35	5145	HPBV10SS	894.00	5075
1 1/4"	HPBV125	380.45	5880	---	---	---
1 1/2"	HPBV150	453.25	5880	---	---	---
2"	HPBV200	674.45	5880	---	---	---



Mini Needle Valves

Mini needle valves are available in a variety of materials, and handle options. All are equipped with both a Viton® O-ring seal and a Teflon® back-up ring below the threads to protect the mini valve from corrosion and galling. The stem threads are rolled for strength and ease of operation, and the metal-to-metal hard seat design is 100% helium leak tested to 1×10^{-4} ml/s at 200 PSI on each mini valve.

- Orifice size: 0.172"
- Flow coefficient: 0.42
- O-ring seal: Viton®
- Back-up ring: Teflon®

Hydraulic Fittings

Male to Female	NPT Thread Size	Handle Style	Material	Operating PSI	Part #	Price/E
	1/8" - 27	knurled knob	brass	3000	MFB101	\$40.85
	1/4" - 18	knurled knob	brass	3000	MFB102	40.85
	1/8" - 27	T design	nickel plated steel	6000	MFC101	\$38.85
	1/4" - 18	T design	nickel plated steel	6000	MFC102	38.85
	1/8" - 27	T design	316 stainless steel	6000	MFS101	\$89.50
	1/4" - 18	T design	316 stainless steel	6000	MFS102	89.50

Female to Female	NPT Thread Size	Handle Style	Material	Operating PSI	Part #	Price/E
	1/8" - 27	knurled knob	brass	3000	FFB101	\$40.85
	1/4" - 18	knurled knob	brass	3000	FFB102	40.85
	1/8" - 27	T design	nickel plated steel	6000	FFC101	\$38.85
	1/4" - 18	T design	nickel plated steel	6000	FFC102	38.85
	1/8" - 27	T design	316 stainless steel	6000	FFS101	\$89.50
	1/4" - 18	T design	316 stainless steel	6000	FFS102	89.50