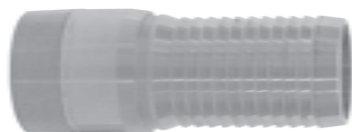




Holedall Fittings

Internal Expansion Stems

- Stems are carbon steel



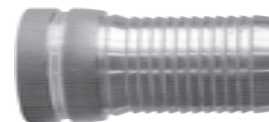
Style IXM
Male Pipe End

Hose I.D. and NPT Size	Part #	Price/E
1"	IXM16	\$43.70
1¼"	IXM20	46.80
1½"	IXM24	39.55
2"	IXM32	42.65
2½"	IXM40	59.95
3"	IXM48	61.60
4"	IXM64	92.70



Style IXH
Heavy Duty Raised End
(California Style)

Hose I.D. and End Size	Part #	Price/E
1½"	IXH24	\$68.40
2"	IXH32	75.60
2½"	IXH40	92.75
3"	IXH48	118.55
4"	IXH64	176.55



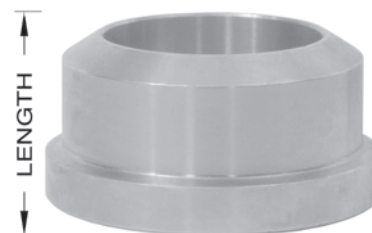
Style IXV
Grooved End

Hose I.D. and Pipe Size	Part #	Price/E
1¼"	IXV20	\$45.35
1½"	IXV24	44.75
2"	IXV32	38.50
2½"	IXV40	59.80
3"	IXV48	62.90
4"	IXV64	98.80

Butt Weld x Heavy Duty Raised End (California Style)

Beveled design for welding to Schedule 40 pipe allows connection to a heavy duty raised end (California style) hose fitting or similar style end. Steel.

Size	Length	Part #	Price / Each
1½"	1½"	HDE24	\$37.05
2"	1½"	HDE32	39.75
2½"	1½"	HDE40	47.15
3"	1½"	HDE48	50.05
4"	1½"	HDE64	59.10



Clamps for IXH Raised End (California Style) Stems

Drop-forged steel clamps for fast assembly when connecting heavy-duty raised end fittings used for concrete. These clamps can be used to connect the ends of pipes or hoses which use the Raised End or California style fittings listed above. Shipped with double lipped gasket and safety pin. 1½" through 3" are galvanized; 4" is painted green. Clamp should only be used with safety pin in place.

Size	Clamps		Gaskets (Buna-N) Only	
	Part #	Price/E	Part #	Price/E
1½"	IXHC150	\$116.35	IXHCG150	\$14.35
2"	IXHC200	113.05	IXHCG200	14.35
2½"	IXHC250	126.75	IXHCG250	14.35
3"	IXHC300	145.70	IXHCG300	17.90
4"	IXHC400	181.80	IXHCG400	17.90



Buna-N gasket

