

Holedall Fittings

Internally Expanded Permanent Couplings - Scovill Style

SAFETY
ALERT

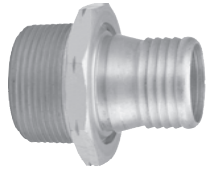
Do not interchange with other manufacturer's fittings.

SAFETY
ALERT

Brass internally expanded permanent coupling are recommended for discharge and suction service. Commonly used in the transfer of fuel in industry to homes, airplanes, ships, etc. The working pressure of the 520-H fitting varies with the size of the fitting, the size and construction of the hose and the media being conveyed. Consult the factory for recommendations. Dixon Holedall stems and ferrules are specifically designed to be used together as a coupling system.

Both the male and female have octagonal facets for tightening with a wrench. The female in 1½" and larger sizes has special lugs for tightening. The stem is expanded to nominal I.D. of hose for a rigid, uniform, full-flow area.

- Male and female stems are machined from bar stock or solid brass forgings; ferrules are available in brass and stainless steel.
- Couplings are compact, light and streamlined to eliminate catching on curbs and shrubs.
- The H520 fittings are designed for internal expansion only.
- Couplings are pre-lubricated for assembly.
- Hand and electrically operated installation equipment is available. Consult factory for pricing and availability.



Hose Size	Male NPT		Male NST		Female NPSH		Female NST		Victaulic Groove	
	Brass Part #	Price/E	Brass Part #	Price/E	Brass Part #	Price/E	Brass Part #	Price/E	Brass Part #	Price/E
3/4"	H5192	\$23.05	---	--	H5191-BU	\$39.85	---	--	---	--
1"	H5212-A	24.20	H5212NST	\$24.60	H5211-A-BU	42.50	H5211NST	\$45.90	G5212	\$30.10
1-1/4"	H5222-A	31.85	---	--	H5221-A-BU	46.05	---	--	---	--
1-3/8"	H5272 ¹	37.95	---	--	H5271-BU ¹	69.45	---	--	---	--
1-1/2"	H5232-A	39.65	H5232NST ²	39.65	H5231-A-BU	70.55	H5231NST ²	76.90	G5232	57.50
2"	H5242	76.00	---	--	H5241-BU	128.15	---	--	G5242	80.50
2-1/2"	H5252	138.00	---	--	H5251 ³	205.30	---	--	---	--
3"	H5262	181.65	---	--	H5261 ³	268.80	---	--	---	--

¹ 1-3/8" stem has 1½" thread

² 1½" NST requires special adapter, part # **H5231NSTADT**

³ 2½" and 3" female parts have NPSM thread.

Note: The fittings on this page are intended for fuel delivery service.

See page 323 for information on API 1529 certification.

520-H Ferrules



A wide range of 520-H ferrules permits a perfect assembly of a coupling to a corresponding size of hose within commercial tolerances regardless of wall thickness. Eliminates need for large stock of coupling bodies. Consult Dixon for other hose O.D.'s.

Hose I.D.	Hose O.D. Range		Brass		Hose I.D.	Hose O.D. Range		Brass		Hose I.D.	Hose O.D. Range		Brass	
	From	To	Part #	Price/E		From	To	Part #	Price/E		From	To	Part #	Price/E
¾"	1-8/64"	1-11/64"	R75AAS	\$7.95	1-3/8"	1-47/64"	1-50/64"	R1375BS	\$15.05	2"	2-27/64"	2-30/64"	R2AAS	\$28.85
	1-12/64"	1-14/64"	R75AS	7.95		1-51/64"	1-54/64"	R1375CS	15.05		2-31/64"	2-34/64"	R2AS	28.85
	1-15/64"	1-17/64"	R75BS	7.95		1-55/64"	1-58/64"	R1375DS	15.05		2-35/64"	2-38/64"	R2BS	28.85
	1-18/64"	1-20/64"	R75CS	7.95		1-59/64"	1-62/64"	R1375ES	15.05		2-39/64"	2-42/64"	R2CS	28.85
1-24/64"	1-26/64"	R1AAAS-A	9.00	1-54/64"		1-57/64"	R15AAAS-A	15.90	2-43/64"		2-46/64"	R2DS	28.85	
1"	1-27/64"	1-29/64"	R1AAS-A	9.00	1-58/64"	1-62/64"	R15AAS-A	15.90	2-47/64"	2-50/64"	R2E	28.85		
	1-30/64"	1-32/64"	R1AS-A	9.00	1-63/64"	2-2/64"	R15AS-A	15.90	2-51/64"	2-54/64"	R2FS	28.85		
	1-33/64"	1-35/64"	R1BS-A	9.00	1½"	2-3/64"	2-6/64"	R15BS-A	15.90	2½"	2-62/64"	3-1/64"	R25AS	43.05
	1-36/64"	1-38/64"	R1CS-A	9.00		2-7/64"	2-11/64"	R15CS-A	15.90		3-2/64"	3-6/64"	R25BS	43.05
	1-39/64"	1-41/64"	R1DS-A	9.00		2-12/64"	2-14/64"	R15DS-A	15.90		3-7/64"	3-11/64"	R25CS	43.05
1-42/64"	1-44/64"	R1ES-A	9.00	2-15/64"		2-19/64"	R15ES-A	15.90	3-12/64"		3-16/64"	R25DS	43.05	
1-39/64"	1-42/64"	R125AAS-A	12.50	2-20/64"		2-24/64"	R15FS	15.90	3-17/64"		3-21/64"	R25ES	43.05	
1¼"	1-43/64"	1-46/64"	R125AS-A	12.50	2-25/64"	2-28/64"	R15GS	15.90	3-22/64"	3-26/64"	R25FS	43.05		
	1-47/64"	1-50/64"	R125BS-A	12.50	3"	3-30/64"	3-34/64"	R3AAAS	57.55	3-40/64"	3-45/64"	R3AS	57.55	
	1-51/64"	1-54/64"	R125CS-A	12.50		3-35/64"	3-39/64"	R3AAS	57.55	3-46/64"	3-50/64"	R3BS	57.55	
	1-55/64"	1-58/64"	R125DS-A	12.50		3-40/64"	3-45/64"	R3AS	57.55	3-51/64"	3-54/64"	R3CS	57.55	
	1-59/64"	1-62/64"	R125ES	12.50										

¹ 1", 1¼" and 1½" ferrules will be replaced by API ferrules on page 323 as inventory is depleted.