



Holedall Fittings

Dubl-Grip® Re-attachable Couplings for Curb Pump Hose

Two-piece re-attachable coupling made of chrome-plated brass for pump hose. Streamlined design prevents damage to hose and fits smartly on new pump equipment. Wide, flat surfaces of body threads protect inside of hose from breaking. Tapered surfaces of sleeve and body cradle hose, prevent one-point strain from flexing. Hose is gripped on its full circumference in two places, insuring a rigid leakproof connection.

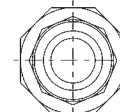
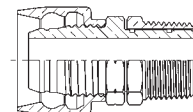
- Worn portion of hose can be removed and Dubl-Grip® can be reapplied.
- Easy assembly:
Hose is held in position by sleeve as body is threaded home.
Only a wrench is required to assemble the Dubl-Grip®.

• **Caution:** Reattach static wire if required.



H-600 Series Dubl-Grip® Swivel Reattachables

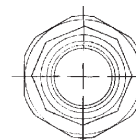
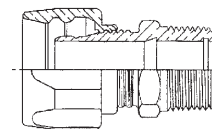
Hose I.D.	x	NPT Male	x	Hose O.D.	Part #	Price/E
5/8"	x	3/4"	x	1-1/16"	H600	\$25.85
5/8"	x	3/4"	x	1"	H601	25.85
5/8"	x	3/4"	x	1-1/32"	H602	25.85
3/4"	x	3/4"	x	1-1/8"	H603	33.25
3/4"	x	3/4"	x	1-13/64"	H604	33.25
3/4"	x	3/4"	x	1-1/4"	H605	33.25
1"	x	1"	x	1-3/8" *	H609	51.10
1"	x	1"	x	1-7/16" *	H610	51.10
1"	x	1"	x	1-1/2" *	H611	51.10



Couplings have standard male NPT threads
* Octagonal shape

Dubl-Grip® Reattachables

Hose I.D.	x	NPT Male	x	Hose O.D.	Part #	Price/E
5/8"	x	3/4"	x	1"	850212	\$18.10
5/8"	x	3/4"	x	1-1/32"	850213	18.10
5/8"	x	3/4"	x	1-1/16"	850214	18.10
3/4"	x	3/4"	x	1-1/8"	850451	23.55
3/4"	x	3/4"	x	1-13/64"	850455	23.55
3/4"	x	3/4"	x	1-1/4"	850453	23.55
1"	x	1"	x	1-3/8" *	850841	36.00
1"	x	1"	x	1-7/16" *	850801	36.00
1"	x	1"	x	1-1/2" *	850811	36.00



Couplings have standard male NPT threads
* Octagonal shape

