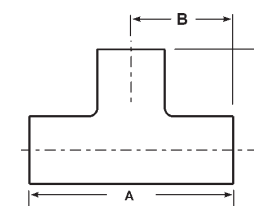
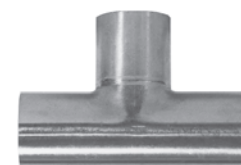


Tube O.D. Tees

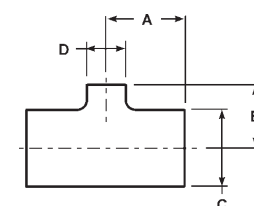
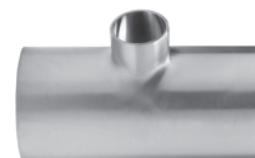
Tube O.D. Weld Long Tees - B7W

Tube OD	Dimensions		Nom. Wall	unpolished 304 Stainless Steel		unpolished 316L Stainless Steel	
	A	B		Part #	Price/E	Part #	Price/E
¾"	4.000	2.000	.065	---	---	B7W-R75U	\$103.45
1"	3.750	1.875	.065	B7W-G100U	\$26.90	B7W-R100U	33.50
1½"	4.500	2.250	.065	B7W-G150U	29.10	B7W-R150U	39.40
2"	6.000	3.000	.065	B7W-G200U	35.65	B7W-R200U	45.85
3"	6.500	3.250	.065	B7W-G300U	76.70	B7W-R300U	110.85



Tube O.D. Weld Reducing Tees - B7RWWW

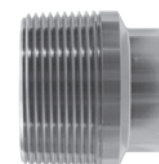
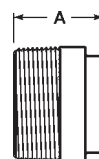
Tube OD	Dimensions				Nom. Wall	unpolished 304 Stainless Steel	
	A	B	C	D		Part #	Price/E
2" x 1½"	2.062	1.906	2.000	1.500	.065	B7RWWW-G200150U	\$47.35
3" x 2"	2.594	2.562	3.000	2.000	.065	B7RWWW-G300200U	103.75
4" x 1½"	3.438	2.906	4.000	1.500	.083	B7RWWW-G400150U	184.25
4" x 2"	3.438	3.062	4.000	2.000	.083	B7RWWW-G400200U	129.30



Tube O.D. Adapters

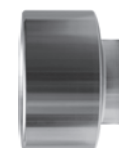
Male NPT x Weld - B19WB

Tube OD	Dimension A	304 Stainless Steel	
		Part #	Price/E
1"	1.750	B19WB-G100	\$20.15
1½"	1.750	B19WB-G150	27.95
2"	1.812	B19WB-G200	41.75
2½"	2.312	B19WB-G250	73.50
3"	2.500	B19WB-G300	99.40
4"	2.562	B19WB-G400	190.80



Female NPT x Weld - B22WB

Tube OD	Dimension A	304 Stainless Steel	
		Part #	Price/E
1"	1.125	B22WB-G100	\$153.05
1½"	1.750	B22WB-G150	174.95
2"	1.812	B22WB-G200	223.35



K
Sanitary Fittings

Weld End Caps - B16W

Tube OD	Dimension A	304 Stainless Steel	
		Part #	Price/E
1"	.375	B16W-G100	\$11.10
1½"	.562	B16W-G150	16.70
2"	.750	B16W-G200	22.15
2½"	1.000	B16W-G250	28.55
3"	1.250	B16W-G300	49.30
4"	1.500	B16W-G400	96.40

