



## Valves

# Pneumatically Actuated 3-Way 'T' Port Stainless Ball Valves

Full Port  
Female NPT x Female NPT



### 3-Way Stainless Ball Valve

- Self adjusting stem packing
- Blow-out proof stem design
- 100% air tested under water at 80 PSI
- Working pressure for 1/4" to 1": **1000 PSI**
- Working pressure for 1 1/4" to 2": **800 PSI**
- Temperature range: **-20°F to 450°F**
- ISO 5211 mounting pad
- Female NPT ends
- Full port style

### Rack and Pinion Actuator

- Bi-directional stops for  $\pm 5^\circ$  travel adjustment
- 80 PSI plant air required
- Maximum operating pressure: **120 PSI**
- Operating temperature range: **-40°F to 200°F**
- Hard anodized aluminum body
- NAMUR mounting
- Nickel plated anti-blowout pinion
- Buna-N O-ring seals
- Visual position indication
- Tested to one million cycles



position A



position D

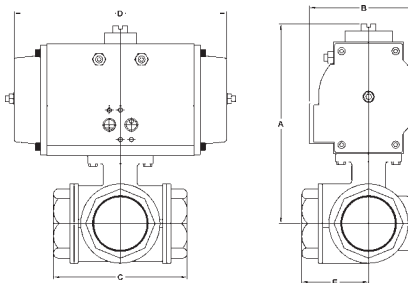


The actuator and valve are assembled with the default flow paths shown. Refer to page 551 for alternate flow paths.

## Spring Return

all dimensions are given in inches

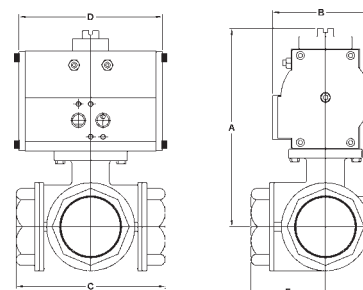
Size	A	B	C	D	E	Part #	Price/E
1/4"	5.35	3.20	2.83	7.10	1.41	<b>BV3IGTF-0251BBC</b>	<b>\$759.75</b>
3/8"	5.35	3.20	2.83	7.10	1.41	<b>BV3IGTF-0381BBC</b>	<b>759.75</b>
1/2"	5.55	3.20	3.26	7.10	1.63	<b>BV3IGTF-0501BBC</b>	<b>800.00</b>
3/4"	6.30	3.74	3.89	7.45	1.94	<b>BV3IGTF-0751BBC</b>	<b>991.10</b>
1"	6.83	3.74	4.40	7.45	2.20	<b>BV3IGTF-1001BBC</b>	<b>1293.75</b>
1 1/4"	7.13	3.74	4.92	7.45	2.46	<b>BV3IGTF-1251BBC</b>	<b>1292.55</b>
1 1/2"	8.43	4.69	5.86	9.10	2.93	<b>BV3IGTF-1501BBC</b>	<b>1724.55</b>
2"	9.97	5.53	6.85	12.99	3.42	<b>BV3IGTF-2001BBC</b>	<b>2669.10</b>



## Double Acting

all dimensions are given in inches

Size	A	B	C	D	E	Part #	Price/E
1/4"	5.35	3.20	2.83	7.10	1.41	<b>BV3IGTF-0251BCC</b>	<b>\$561.50</b>
3/8"	5.35	3.20	2.83	7.10	1.41	<b>BV3IGTF-0381BCC</b>	<b>561.50</b>
1/2"	5.55	3.20	3.26	7.10	1.63	<b>BV3IGTF-0501BCC</b>	<b>601.75</b>
3/4"	6.30	3.74	3.89	7.45	1.94	<b>BV3IGTF-0751BCC</b>	<b>790.20</b>
1"	6.83	3.74	4.40	7.45	2.20	<b>BV3IGTF-1001BCC</b>	<b>905.25</b>
1 1/4"	7.13	3.74	4.92	7.45	2.46	<b>BV3IGTF-1251BCC</b>	<b>1173.55</b>
1 1/2"	8.43	4.69	5.86	9.10	2.93	<b>BV3IGTF-1501BCC</b>	<b>1417.95</b>
2"	9.97	5.53	6.85	12.99	3.42	<b>BV3IGTF-2001BCC</b>	<b>2210.50</b>



A wide variety of switches, solenoids, positioners, etc., are available. Contact the factory at 800.789.1718 for details.

<b>SAFETY</b> ALERT	<b>Caution !</b>	<b>SAFETY</b> ALERT
<p>Even though there are torque safety factors built into our automated ball valve packages, actual service conditions must also be considered when selecting the proper product for the appropriate application.</p> <p>For example: Severe service conditions such as dirty water, dirty air, all slurries, raw sewage water, oils, and other viscous fluids can have a dramatic affect in raising the torque requirements of ball valves as much as 75% and therefore larger actuators may be required. Please consult the factory when dealing with these types of applications.</p>		