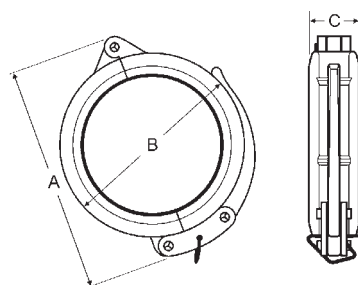




Pipe and Welding Fittings

Quick Release Couplings - Series Q

Quick release couplings are specially designed for applications requiring a quick connection and/or disconnection of a pipe joint. A locking pin through the handle prevents accidental opening of the coupling. Ductile iron body with zinc plating and steel safety clip. See page 484 for replacement gaskets.



Interchangeable with:
Victaulic's #78
Grinnell's #7003

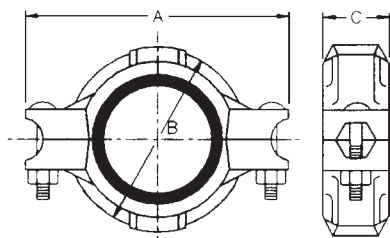


Nominal Size	Pipe O.D.	Max PSI	Max End Load Lbs.	Coupling Dimensions			Approx. Weight Lbs.	Part # w/EPDM gasket	Part # w/ Buna-N gasket	Price / Each
				A	B	C				
1-1/2"	1.900"	500	850	4-3/4"	3-1/2"	1"	1.5	H315	H315BU	\$96.50
2"	2.375"	500	1329	5-1/2"	3-3/4"	1-3/4"	2.5	H32	H32BU	92.60
2-1/2"	2.875"	500	2120	5-7/8"	4-3/4"	1-7/8"	4.0	H325	H325BU	101.80
3"	3.500"	500	2886	7-1/4"	5-1/4"	1-3/4"	3.8	H33	H33BU	118.85
4"	4.500"	500	4771	8-1/2"	6-1/2"	2"	6.0	H34	H34BU	153.15
6"	6.625"	500	10341	10-5/8"	8-1/2"	2"	8.6	H36	H36BU	329.05

Rigid Couplings - Series R



This lightweight, low pressure, rigid style coupling is ideal for fire protection, plumbing, low pressure air and drainage. Small gripping teeth hold the housing into the groove allowing a straight run of pipe and preventing any flex at the joint. Ductile iron body with rust inhibiting paint. **Underwriters listed and Factory Mutual approved.** See page 484 for replacement gaskets.



Interchangeable with:
Victaulic's #005
Grinnell's #7400



Nominal Size	Pipe O.D.	Max PSI	Max End Load Lbs.	Coupling Dimensions			Bolts		Approx. Weight Lbs.	Part # w/EPDM gasket	Part # w/ Buna-N gasket	Price / Each
				A	B	C	Qty.	Size				
2"	2.375"	175	4425	5"	3-15/64"	1-3/4"	2	3/8" x 2"	1.5	R72	R72BU	\$17.00
2-1/2"	2.875"	175	6490	5-5/8"	3-45/64"	1-3/4"	2	3/8" x 2"	1.7	R725	R725BU	13.50
3"	3.500"	175	9620	6-29/64"	4-5/16"	1-3/4"	2	3/8" x 2"	2.5	R73	R73BU	20.60
4"	4.500"	175	12720	7-53/64"	5-17/32"	2"	2	1/2" x 2-3/4"	3.6	R74	R74BU	26.00
6"	6.625"	175	27570	10-23/64"	7-37/64"	2"	2	5/8" x 3-1/4"	5.8	R76	R76BU	44.00
8"	8.625"	175	35050	13-25/32"	10"	2-21/64"	2	5/8" x 3-1/4"	15.9	R78	R78BU	65.00

N
Pipe & Welding