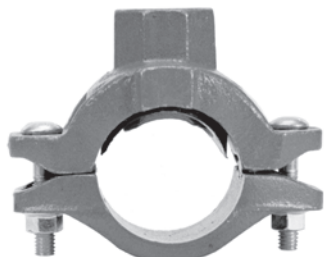




## Pipe and Welding Fittings

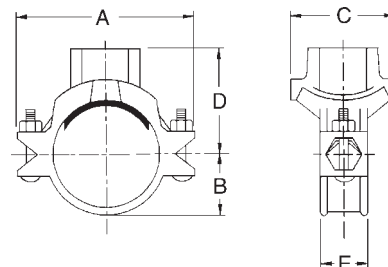
### **Mechanical T's - Series T**

Mechanical tees provide a fast easy way to install a threaded connection along a length of pipe. After drilling or cutting a hole in the pipe at the location of the branch connection, simply attach the clamps around the pipe for a leak-free threaded outlet connection. See chart below for drilling hole specifications. Ductile iron body with rust inhibiting paint. **Underwriters listed and Factory Mutual approved.**



Interchangeable with:  
Victaulic's #920  
Grinnell's #7045

**Maximum Working Pressure: 300 PSI.**



Nominal x Branch Size	Hole Saw Dia.	Max Hole Dia.	Clamp Dimensions					Coupling Bolts		Approx. Weight Lbs.	Part #	Price / Each
			A	B	C	D	E	Qty.	Size			
2" x 1"	1-1/2"	1-5/8"	5-1/16"	1-1/2"	2-3/4"	2-5/8"	1-7/8"	2	3/8" x 2"	2.4	<b>MT2010</b>	<b>\$30.00</b>
2" x 1-1/4"	1-3/4"	1-7/8"	5-1/16"	1-1/2"	2-15/16"	2-3/4"	1-7/8"	2	3/8" x 2"	2.9	<b>MT20125</b>	<b>33.00</b>
2" x 1-1/2"	1-3/4"	1-7/8"	5-1/16"	1-1/2"	2-15/16"	2-3/4"	1-7/8"	2	3/8" x 2"	2.8	<b>MT20150</b>	<b>33.00</b>
2-1/2" x 1"	1-1/2"	1-5/8"	5-5/32"	1-11/16"	3"	2-31/32"	2"	2	1/2" x 2-5/8"	3.1	<b>MT25010</b>	<b>38.00</b>
2-1/2" x 1-1/4"	2"	2-1/8"	5-13/16"	1-11/16"	3-11/32"	3"	2"	2	1/2" x 2-5/8"	3.3	<b>MT250125</b>	<b>41.00</b>
3" x 1"	1-1/2"	1-5/8"	6-11/32"	2-1/8"	3-3/32"	3-1/16"	2"	2	1/2" x 2-3/4"	3.3	<b>MT3010</b>	<b>45.00</b>
3" x 1-1/4"	2"	2-1/8"	6-11/32"	2-1/8"	3-3/4"	3-3/8"	2"	2	1/2" x 2-3/4"	4.0	<b>MT30125</b>	<b>41.00</b>
3" x 1-1/2"	2"	2-1/8"	6-11/32"	2-1/8"	3-3/4"	3-3/8"	2"	2	1/2" x 2-3/4"	3.4	<b>MT30150</b>	<b>41.00</b>
3" x 2"	2-1/2"	2-5/8"	6-11/32"	2-1/8"	4-1/8"	3-3/8"	2"	2	1/2" x 2-3/4"	4.0	<b>MT3020</b>	<b>46.25</b>
4" x 1"	1-1/2"	1-5/8"	7-5/16"	2-9/16"	3-3/32"	3-1/2"	2"	2	1/2" x 2-3/4"	4.4	<b>MT4010</b>	<b>57.25</b>
4" x 1-1/4"	2"	2-1/8"	7-5/16"	2-9/16"	3-3/4"	3-7/8"	2"	2	1/2" x 2-3/4"	5.1	<b>MT40125</b>	<b>47.00</b>
4" x 1-1/2"	2"	2-1/8"	7-5/16"	2-9/16"	3-3/4"	3-7/8"	2"	2	1/2" x 2-3/4"	4.9	<b>MT40150</b>	<b>49.00</b>
4" x 2"	2-1/2"	2-5/8"	7-5/16"	2-9/16"	4-1/8"	4"	2"	2	1/2" x 2-3/4"	5.3	<b>MT4020</b>	<b>49.00</b>
4" x 2-1/2"	2-3/4"	2-7/8"	7-5/16"	2-9/16"	4-3/8"	4"	2"	2	1/2" x 2-3/4"	5.4	<b>MT40250</b>	<b>51.00</b>
4" x 3"	3-1/2"	3-5/8"	7-5/16"	2-9/16"	5-1/4"	4-1/4"	2"	2	1/2" x 2-3/4"	6.4	<b>MT4030</b>	<b>54.50</b>
6" x 1-1/4"	2-1/2"	2-5/8"	10-5/32"	3-11/16"	4-1/8"	4-7/8"	2-1/4"	2	5/8" x 3-1/4"	8.6	<b>MT60125</b>	<b>61.50</b>
6" x 1-1/2"	2-1/2"	2-5/8"	10-5/32"	3-11/16"	4-1/8"	4-7/8"	2-1/4"	2	5/8" x 3-1/4"	8.4	<b>MT60150</b>	<b>61.50</b>
6" x 2"	2-1/2"	2-5/8"	10-5/32"	3-11/16"	4-1/8"	5"	2-1/4"	2	5/8" x 3-1/4"	7.6	<b>MT6020</b>	<b>61.50</b>
6" x 2-1/2"	2-3/4"	2-7/8"	10-5/32"	3-11/16"	4-3/8"	5-1/8"	2-1/4"	2	5/8" x 3-1/4"	8.4	<b>MT60250</b>	<b>74.00</b>
6" x 3"	3-1/2"	3-5/8"	10-5/32"	3-11/16"	5-1/4"	5-3/8"	2-1/4"	2	5/8" x 3-1/4"	9.2	<b>MT6030</b>	<b>71.00</b>
6" x 4"	4-1/2"	4-5/8"	10-5/32"	3-11/16"	6-1/4"	5-3/8"	2-1/4"	2	5/8" x 3-1/4"	9.8	<b>MT6040</b>	<b>78.00</b>

N

Pipe &  
Welding