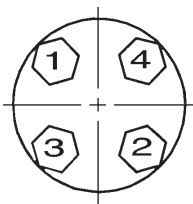


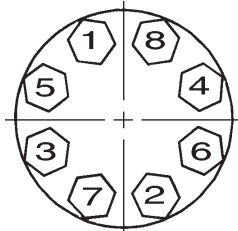


## Flange Information

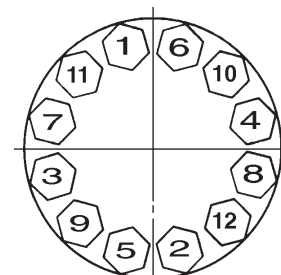
### Flange Bolt Tightening Sequence (Use appropriate gaskets and bolts)



4 Bolt



8 Bolt

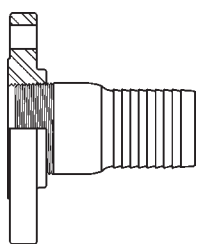


12 Bolt

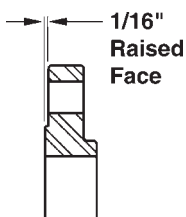
See page 526 for drilling dimensions

## Flange Diagrams

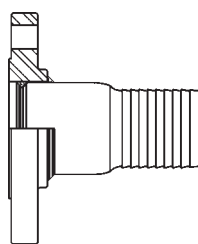
### Threaded Applications



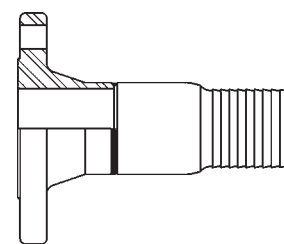
Threaded Flange  
with raised face



### Welded Applications

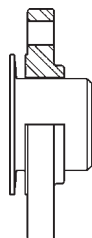


Slip-On Flange  
with raised face

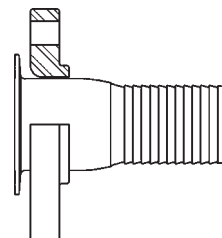


Weld Neck Flange  
with raised face

### Floating Applications (flange free to swivel)



Slip-On Flange  
with raised face



Lap-Joint Flange

## Pressure - Temperature Ratings

Pressure Class	150	300
Test Pressure	425	1100
Service Temperature	Pressure	
-20 to 100	275	720
150	255	710
200	240	700
250	225	690
300	210	680
350	195	675
400	180	665
450	165	650
500	150	625
550	140	590
600	130	555
650	120	515
700	110	470
750	100	425

**Note:** Ratings apply to all products covered by USA B16.5 valves conforming to the requirements of this standard must, in other respects, merit these ratings.

All ratings are maximum allowable non-shock pressures (PSIG) at the tabulated temperatures (degree Fahrenheit) and may be interpolated between temperatures shown. The primary service pressure ratings are shown in bold face type. Temperatures are those on the inside of the pressure retaining structure.

The use of these ratings requires gaskets conforming to the requirements of USA B16.5. The user is responsible for selecting gaskets of dimensions and materials to withstand the required bolt loading without injurious crushing, and suitable for the service conditions in all other respects.