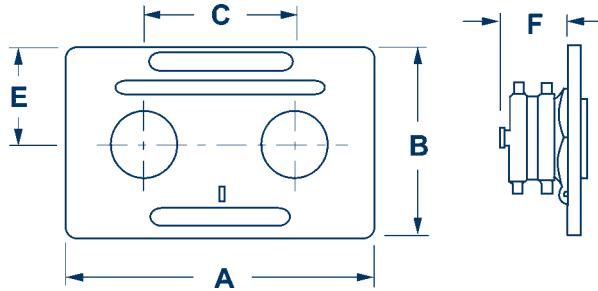


Double Clapper Concealed Type Siamese Assemblies

22-229



22-229

Wall Plate	Dimensions (inches)				
	A	B	C	E	F
24-385	14	8	7-5/8	4-15/16	3-5/8

The model 22-229 Double Clapper Siamese is a complete unit consisting of the following six parts:

- (1) 23-393 reversible double clapper angle pattern concealed body, or 23-387 straight body
- (1) 24-385 plate
- (2) 23-270 double female connections
- (2) 17-127 plugs with chains

The unique design of clappers on the 23-393 is fully reversible with a perpendicular trunion allowing one body to be installed for top and bottom connections.

- Cast brass
- Branded: 'standpipe', 'auto-sprk', 'auto-sprk.-standpipe'
- Finish: cast, polished or polished chrome
- For use up to **250 PSI**

-P polished
-C polished chrome plated

Outlet Female NPT	(2) Inlets Female NH(NST)	Branding	Dixon Part #	Powhatan Part #
4"	2½"	AutoSprinkler		22-229-00001
4"	2½"	StandPipe		22-229-00002
4"	2½"	AutoSprinkler		22-229-00003
4"	2½"	StandPipe		22-229-00004
4"	3"	AutoSprinkler		22-229-00009
6"	2½"	AutoSprinkler		22-229-00005
6"	2½"	StandPipe		22-229-00006
6"	2½"	AutoSprinkler		22-229-00007
6"	2½"	StandPipe		22-229-00008

- Other branding and finishes are also available, consult the factory for pricing and availability