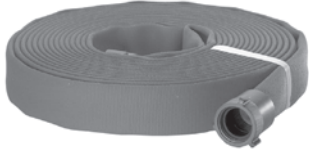


Double Jacket Potable Water Hose - Blue

NSF approved materials for potable water

- Outer construction: double jacket, all polyester
- Tube construction: thermoplastic
- Impregnation color: blue (color coded for water)
- Proof Pressure: **600 PSI**
- Service Test Pressure: **300 PSI**
- Working Pressure: **270 PSI**
- Coupled with female and male expansion ring couplings



Thread NPSH	Coupling Type	Length	Dixon Part #
1½"	Rocker lug, <i>brass</i>	50'	PW615B50RBS
2½"	Rocker lug, <i>brass</i>	50'	PW625B50RBS

- 100' lengths are available. *Consult the factory for pricing and availability.*
- Double jacket hoses are **NOT** recommended for use with Dixon's flat seal re-attachable couplings.

500# Urethane Covered Fire Hose - Red

Ideal for industrial Petrochemical and HAZMAT use

- Outer construction: red urethane
- Tube construction: black urethane
- Proof Pressure: **500 PSI**
- Service Test Pressure: **250 PSI**
- Coupled with female and male expansion ring couplings



Thread NH (NST)	Coupling Type	Length	Dixon Part #
1½"	Rocker lug, <i>aluminum</i>	50'	N515R50RAF
1½"	Rocker lug, <i>brass</i>	50'	N515R50RBF

- Other lengths, threads and couplings are also available. *Consult the factory for pricing and availability.*