

Pneumatic Option List Adders

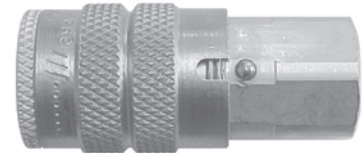
Optional Seal List Adders

Part Prefix	Body Size	Seal Material	D Series	F Series	J Series	A Series	P Series	1058 Series	N Series
F-	1/4"	Viton™	1.85	1.85	1.85	1.85	-	-	-
P-	1/4"	EPDM	2.00	2.00	2.00	2.00	-	-	-
F-	3/8"	Viton™	2.40	-	-	-	-	-	-
F-	1/2"	Viton™	3.00	-	-	-	11.50	-	9.00
F-	3/4"	Viton™	-	-	-	-	-	11.50	-



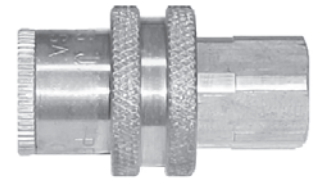
Optional Safety Sleeve-Lock Adders

Part Suffix	Body Size	Lock Type	D Series	F Series	J Series	A Series	P Series	1058 Series
-LS	1/8"	Pin	-	-	-	4.20	-	-
-LS	1/4"	Pin	4.20	4.20	4.20	4.20	-	-
-LS	3/8"	Pin	4.90	4.90	4.90	-	-	-
-LS	1/2"	Pin	4.90	4.90	-	-	-	-
-LS	3/4"	Pin	6.30	-	-	-	-	-



Optional Grip-Ring Flanged Sleeve Adders

Part Suffix	Body Size	Sleeve Material	D Series	F Series	J Series	A Series	P Series	1058 Series
-FS	1/8"	-	-	-	-	-	-	-
-FS	1/4"	brass	-	-	1.80	-	-	-
-FS	3/8"	-	-	-	-	-	-	-
-FS	1/2"	-	-	-	-	-	-	-
-FS	3/4"	-	-	-	-	-	-	-



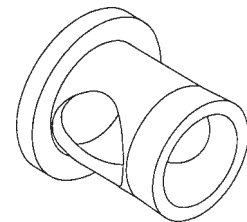
Optional Material Sleeve Adders

Part Suffix	Body Size	Sleeve Material	D Series	F Series	J Series	A Series	P Series	1058 Series
-BS	1/4"	brass	-	1.30	1.30	-	-	-
-XS	1/4"	303 SS	-	7.60	-	-	-	-
-BS	3/8"	brass	-	-	-	-	-	-
-XS	3/8"	303 SS	-	15.50	-	-	-	-
-BS	1/2"	brass	-	-	-	-	-	-
-XS	1/2"	303 SS	-	20.00	-	-	-	-



Optional Valve Adders

Part Suffix	Body Size	Valve Material	D Series	F Series	J Series	A Series	P Series	1058 Series
-E	1/4"	unvalved	-.065	-0.65	-0.65	-0.65	-	-
-BV	1/4"	brass	0.90	0.90	0.90	0.90	-	-
-SV	1/4"	303 SS	1.60	1.60	1.60	1.60	-	-
-E	3/8"	unvalved	-2.70	2.20	2.70	-	-	-
-BV	3/8"	brass	2.90	-	-	-	-	-
-SV	3/8"	303 SS	5.00	5.00	5.00	-	-	-
-E	1/2"	unvalved	-3.00	-3.00	-3.00	-	-	-
-BV	1/2"	brass	3.50	-	-	-	-	-
-SV	1/2"	303 SS	6.90	6.90	6.90	-	-	-
-E	3/4"	unvalved	-3.80	-	-	-	-	-
-BV	3/4"	brass	4.00	-	-	-	-	-
-SV	3/4"	303 SS	-	-	-	-	-	-



Tube Valve

Note - 3/4" couplers have a prong valve as standard. 1/4" to 1/2" prong valves can be special ordered.

Special Process Adders

Part Suffix	Body Size	Special Process	D Series	F Series	J Series	A Series	P Series	N Series
-C1	1/8"	Oxy-clean	-	-	-	10.00	-	-
-C1	1/4"	Oxy-clean	10.00	10.00	10.00	10.00	-	-
-C1	3/8"	Oxy-clean	10.00	10.00	10.00	-	-	-
-C1	1/2"	Oxy-clean	10.50	10.50	10.50	-	-	-
-C1	3/4"	Oxy-clean	11.00	-	-	-	10.50	10.50
-C2	1/8"	Silicone Free	-	-	-	10.00	-	-
-C2	1/4"	Silicone Free	10.00	10.00	10.00	10.00	-	-
-C2	3/8"	Silicone Free	10.50	10.50	10.50	-	-	-
-C2	1/2"	Silicone Free	11.00	11.00	11.00	-	-	-
-C2	3/4"	Silicone Free	11.50	11.50	-	-	11.50	11.50

