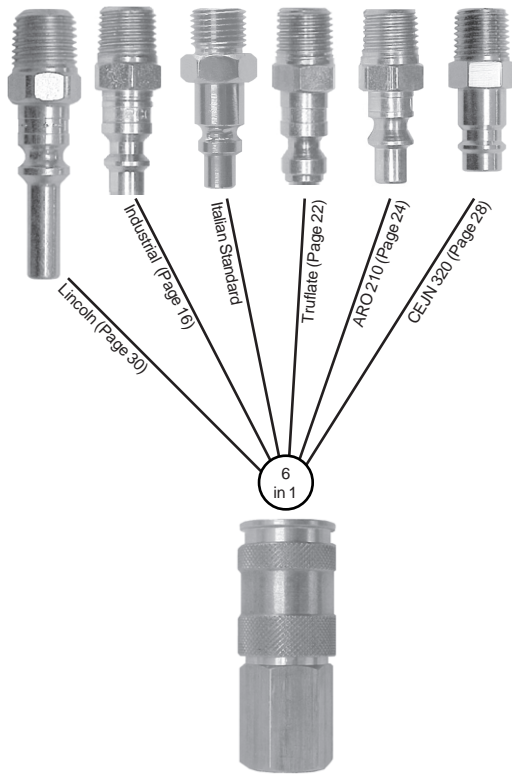


## 2U-Series 6-in-1 Universal Coupler (1/4" Size)



- U-Series 1/4" couplers are the first 6-in-1, accepting: ARO 210, MIL-C-4109F, Trufflate, Lincoln, Italian Standard, and CEJN 320.
- Universal couplers have a high concentration of locking balls to reduce incidents of brinneling during operation.
- Euro-style valving ensures maximum flow performance and automatic connection with minimal force required.
- Couplers have a sleeve-guard 'Lip' to reduce the risk of accidental disconnection while in service.
- Pneumatically energized seal molds itself to each nipple to maximize sealing performance at all pressures.

Performance Specifications	Operating Bar (PSI)	Min. Burst Bar (PSI)	Flow ΔP=0.4 Bar (6.9 Bar Inlet)	Locking Mechanism
1/4"	21 (300)	97 (1,400)	70 CFM	6 Balls

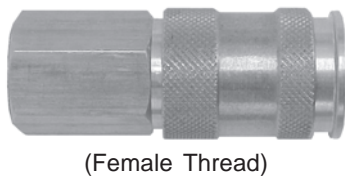
Please Note: Operating and flow specifications are dependent upon the nipple that is inserted into the coupler. The lower performance rating between the coupler or nipple must take precedence.

'2U' Coupler Equivalent	Parker	Hansen	Coilhose	Tomco
1/4"	UC-Series	Auto-Flo 23	'U' Series	Series UC

Please Note: Many competitive Universal couplings are unable to match the performance capabilities of the Dixon U-Series. In addition to the performance constraints, each of the competitive Universal couplers listed above only accept three pneumatic nipple styles.

Dry Air: Some pneumatic applications require the pressurized air to be 'dried' to ensure proper operation of equipment and/or application of product (i.e. auto body shops). It is best to match like series couplers and nipples in these applications. If it is necessary to use a universal coupler, lube seal and and valve area regularly to ensure reliable service.

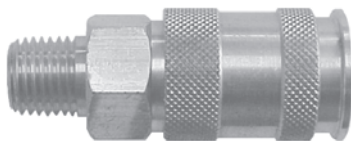
### U-Series 1/4" Universal (Automatic Coupler)



(Female Thread)

Part Number	Body Size	Thread Size	Body Material	Weight (lb)	List Price	Bag Qty	Pack Qty
2UF2-B	1/4"	1/4"-18 NPTF	brass	0.26	\$15.03	10	100
2UF2-B-LS	1/4"	1/4"-18 NPTF	brass	0.26	17.13	10	100
F-2UF2-S	1/4"	1/4"-18 NPTF	303 SS	0.27	84.29	10	100
2UBF2-B	1/4"	G1/4" BSPP	brass	0.26	15.57	10	100
2UF3-B	1/4"	3/8"-18 NPTF	brass	0.27	15.57	10	100

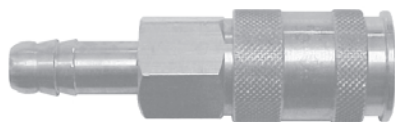
### U-Series 1/4" Universal (Automatic Coupler)



(Male Thread)

Part Number	Body Size	Thread Size	Body Material	Weight (lb)	List Price	Bag Qty	Pack Qty
2UM2-B	1/4"	1/4"-18 NPTF	brass	0.24	\$15.03	10	100
2UM2-B-LS	1/4"	1/4"-18 NPTF	brass	0.24	17.13	10	100
F-2UM2-S	1/4"	1/4"-18 NPTF	303 SS	0.25	84.19	10	100
2UBM2-B	1/4"	R1/4" BSPT	brass	0.24	15.57	10	100
2UM3-B	1/4"	3/8"-18 NPTF	brass	0.25	16.47	10	100

### U-Series 1/4" Universal (Automatic Coupler)



(Standard & Push-Loc Hose Barb)

Part Number	Body Size	Barb Configuration	Body Material	Weight (lb)	List Price	Bag Qty	Pack Qty
2US2-B	1/4"	1/4" Hose Barb	brass	0.26	\$15.97	10	100
F-2US2-S	1/4"	1/4" Hose Barb	303 SS	0.26	84.19	10	100
2UB2-B	1/4"	1/4" Push-Loc	brass	0.25	16.62	10	100
2US2.5-B	1/4"	5/16" Hose Barb	brass	0.26	15.85	10	100
2US3-B	1/4"	3/8" Hose Barb	brass	0.27	16.47	10	100
2UB3-B	1/4"	3/8" Push-Loc	brass	0.26	16.62	10	100



Attention Required!

Although the Universal coupler permits multiple series nipples to mate with one coupler, it is recommended to match like series couplers and nipples. When using a Universal coupler, the lower performance rating between the coupler and nipple must take precedence.