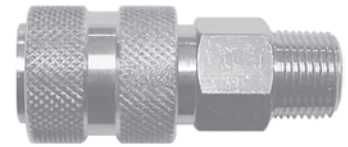


SHD-Series Rectus '17' Interchange (Automatic Coupler)

Part Number	Body Size	Thread Size	Body Material	Weight (lb)	List Price	Bag Qty	Pack Qty
2SHDM2-B-PB	1/4"	1/4"-18 NPTF	brass	0.25	\$9.13	10	100
2SHDBM2-B-PB1/4"	1/4"	R1/4" BSPP	brass	0.25	9.13	10	100



(Male Thread)

SHD-Series Schrader/Rectus '17' Interchange (Nipple)

Part Number	Body Size	Thread Size	Body Material	Weight (lb)	List Price	Bag Qty	Pack Qty
SHD2M1	1/4"	1/8"-27 NPTF	steel	0.05	\$2.17	10	100
SHD2M2	1/4"	1/4"-18 NPTF	steel	0.05	2.17	10	100
SHD2BM2	1/4"	R1/4" BSPP	steel	0.05	2.17	10	100
SHD4M2	1/2"	1/4"-18 NPTF	steel	0.12	3.99	5	30
SHD4M3	1/2"	3/8"-18 NPTF	steel	0.12	4.34	5	30
SHD4M4	1/2"	1/2"-14 NPTF	steel	0.13	4.47	5	30



(Male Thread)

SHD-Series Schrader Interchange (Twist-Lock Coupler)

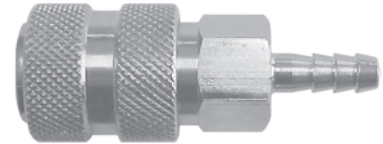
Part Number	Body Size	Barb Configuration	Body Material	Weight (lb)	List Price	Bag Qty	Pack Qty
2SHDS2	1/4"	1/4" Hose Barb	steel	0.22	\$16.31	10	100
2SHDS3	1/4"	3/8" Hose Barb	steel	0.21	17.76	10	100
4SHDS3	1/2"	3/8" Hose Barb	steel	0.39	28.32	5	30
4SHDS4	1/2"	1/2" Hose Barb	steel	0.40	28.62	5	30



(Standard Hose Barb)

SHD-Series Rectus '17' Interchange (Automatic Coupler)

Part Number	Body Size	Barb Configuration	Body Material	Weight (lb)	List Price	Bag Qty	Pack Qty
2SHDS2-B-PB	1/4"	1/4" Hose Barb	brass	0.26	\$9.38	10	100
2SHDS3-B-PB	1/4"	3/8" Hose Barb	brass	0.27	9.38	10	100



(Standard Hose Barb)

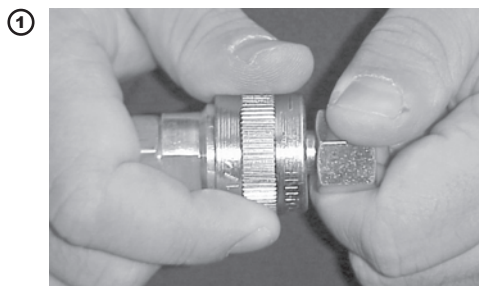
SHD-Series Schrader/Rectus '17' Interchange (Nipple)

Part Number	Body Size	Barb Configuration	Body Material	Weight (lb)	List Price	Bag Qty	Pack Qty
SHD2S2	1/4"	1/4" Hose Barb	steel	0.04	\$2.17	10	100
SHD2S3	1/4"	3/8" Hose Barb	steel	0.06	2.88	10	100
SHD4S3	3/8"	3/8" Hose Barb	steel	0.11	4.95	10	50
SHD4S4	1/2"	1/2" Hose Barb	steel	0.12	5.17	10	50

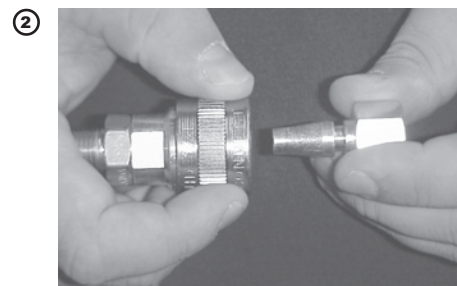


(Standard Hose Barb)

Disconnecting the Twist-Lock Coupler



Turn the sleeve of the coupler in the direction of the arrow stamped on the sleeve. It only requires a 1/8th turn to disengage the retention pawls.



Remove the nipple portion of the coupling from the coupler.