

P-Series Thor Interchange (Flanged-Sleeve Coupler)

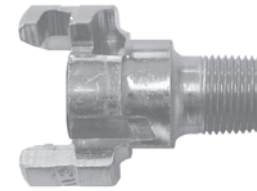
Part Number	Body Size	Thread Size	Body Material	Weight (lb)	List Price	Pack Qty
4PM3-FS	1/2"	3/8"-18 NPTF	steel	0.55	\$33.59	25
4PM4-FS	1/2"	1/2"-14 NPTF	steel	0.55	32.92	25
4PM6-FS	1/2"	3/4"-14 NPTF	steel	0.59	32.92	25



(Male Thread)

P-Series Thor Interchange (Nipple)

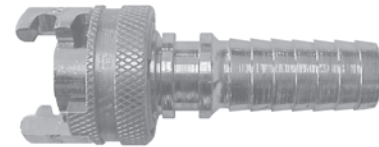
Part Number	Body Size	Thread Size	Body Material	Weight (lb)	List Price	Pack Qty
P4M3	1/2"	3/8"-18 NPTF	steel	0.29	\$17.54	25
P4M4	1/2"	1/2"-14 NPTF	steel	0.32	17.21	25
P4M4-B	1/2"	1/2"-14NPTF	brass	0.35	55.41	25
P4M6	1/2"	3/4"-14 NPTF	steel	0.44	18.07	25
P4M6-B	1/2"	3/4"-14 NPTF	brass	0.48	59.83	25
P4M6-S	1/2"	3/4"-14 NPTF	303 SS	0.46	133.40	25
P4M8	1/2"	1"-11 1/2 NPTF	steel	0.62	20.25	25
P4M8-B	1/2"	1"-11 1/2 NPTF	brass	0.66	59.83	25



(Male Thread)

P-Series Thor Interchange (Coupler)

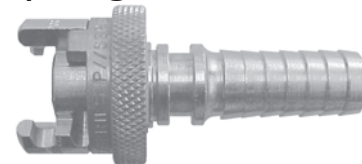
Part Number	Body Size	Barb Configuration	Body Material	Weight (lb)	List Price	Pack Qty
4PS3	1/2"	3/8" hose barb	steel	0.48	\$31.33	25
4PS4	1/2"	1/2" hose barb	steel	0.52	31.33	25
4PS4-B	1/2"	1/2" hose barb	brass	0.57	68.53	25
4PS6	1/2"	3/4" hose barb	steel	0.55	33.09	25
4PS6-B	1/2"	3/4" hose barb	brass	0.58	77.98	25
4PS6-S	1/2"	3/4" hose barb	303 SS	0.59	309.00	25
4PS8	1/2"	1" hose barb	steel	0.94	40.14	25
4PS8-B	1/2"	1" hose barb	brass	0.98	85.03	25



(Hose Barb - now accepts light duty ferrules)

P-Series Thor Interchange (Flanged-Sleeve Coupler)

Part Number	Body Size	Barb Configuration	Body Material	Weight (lb)	List Price	Pack Qty
4PS3-FS	1/2"	3/8" hose barb	steel	0.55	\$34.78	25
4PS4-FS	1/2"	1/2" hose barb	steel	0.59	34.78	25
4PS6-FS	1/2"	3/4" hose barb	steel	0.61	36.53	25
4PS8-FS	1/2"	1" hose barb	steel	0.99	42.82	25



(Hose Barb - now accepts light duty ferrules)

P-Series Thor Interchange (Coupler)

Part Number	Body Size	Hose (ID) OD Range	Body Material	Weight (lb)	List Price	Pack Qty
4PCS4-WF43	1/2"	(1/2") 27/32" to 1-1/32"	steel	0.30	\$37.75	25
4PCS4-B-WF43	1/2"	(1/2") 27/32" to 1-1/32"	brass	0.28	74.75	25
4PCS6-WF63	1/2"	(3/4") 1-5/32" to 1-11/32"	steel	0.28	39.50	25
4PCS6-B-WF63	1/2"	(3/4") 1-5/32" to 1-11/32"	brass	0.28	84.25	25



(Hose Barb with Staked Ferrule)

P-Series Thor Interchange (Flanged-Sleeve Coupler)

Part Number	Body Size	Hose (ID) OD Range	Body Material	Weight (lb)	List Price	Pack Qty
4PCS4-FS-WF43	1/2"	(1/2") 27/32" to 1-1/32"	steel	0.30	\$41.00	25
4PCS6-FS-WF63	1/2"	(3/4") 1-5/32" to 1-11/32"	steel	0.28	42.75	25



(Hose Barb with Staked Ferrule)

P-Series Thor Interchange (Replacement Parts)

Part Number	Body Size	Part Description	Part Material	Weight (lb)	List Price	Bag Qty	Pack Qty
4P-SKIT	1/2"	Seal Gasket	Nitrile	0.01	\$1.31	10	500
4P-CLIP	1/2"	Sleeve-Lock Clip	steel	0.01	1.02	10	100



P-Series