

WS-Series Blowout Prevention Safety Coupling



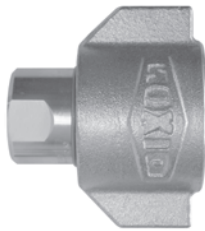
- Fire tested and Lloyd's certified to 700°C (1300°F) in accordance with API 16D (Certificate #NAO 0601041/1)
- Designed for hazardous area service where couplings are required to operate under fire conditions in an emergency.
- Sleeve is cast using a unique process that provides better surface finishes, tighter tolerance control, and excellent repeatability.
- Blowout Prevention Couplings are individually marked with the BOP series designation and manufacturing date code.

Performance Specifications	Operating Bar (PSI)	Coupled Burst Bar (PSI)	Flow Rate ΔP=2 Bar	Locking Mechanism
3/4" steel	345 (5,000)	1,380 (20,000)	157 LPM (40 GPM)	Threaded
1" steel	345 (5,000)	1,380 (20,000)	227 LPM (60 GPM)	Threaded
1-1/4" steel	345 (5,000)	1,035 (15,000)	310 LPM (82 GPM)	Threaded
1-1/2" steel	345 (5,000)	1,035 (15,000)	416 LPM (110 GPM)	Threaded
2" steel	345 (5,000)	1,035 (15,000)	908 LPM (240 GPM)	Threaded

Please Note: To calculate the working pressure of 316SS parts, multiply the above Operating Pressures by 0.35

WS-Series Blowout Prevention Safety Coupling (Coupler)

BOP-Series

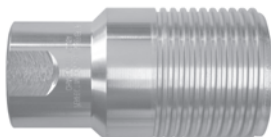


(Female Thread)

Wrench flats are pictured, non-flat fittings are standard.
(add -WF suffix to part number for flats)

Part Number	Body Size	Thread Size	Body Material	Wrench Flats	List Price	Bag Qty	Pack Qty
6WSF4-BOP	3/4"	1/2"-14 NPTF	steel	Yes	\$142.38	---	5
6WSF6-BOP	3/4"	3/4"-14 NPTF	steel	Yes	158.20	---	5
6WSF6-SS-BOP *	3/4"	3/4"-14 NPTF	316 SS	Yes	2069.76	---	5
6WSBF6-BOP	3/4"	G3/4" BSPP	steel	No	158.20	---	5
8WSF8-BOP	1"	1"-11 1/2 NPTF	steel	Yes	222.60	---	5
8WSF8-SS-BOP *	1"	1"-11 1/2 NPTF	316 SS	Yes	2593.47	---	5
8WSBF8-BOP	1"	G1" BSPP	steel	No	222.60	---	5
10WSF10-BOP	1-1/4"	1-1/4"-11 1/2 NPTF	steel	No	361.20	---	1
10WSF10-SS-BOP *	1-1/4"	1-1/4"-11 1/2 NPTF	316 SS	No	3869.82	---	1
10WSBF10-BOP	1-1/4"	G1-1/4" BSPP	steel	No	361.20	---	1
12WSF12-BOP	1-1/2"	1-1/2"-11 1/2 NPTF	steel	No	515.20	---	1
12WSF12-SS-BOP *	1-1/2"	1-1/2"-11 1/2 NPTF	316 SS	No	4683.62	---	1
12WSBF12-BOP	1-1/2"	G1-1/2" BSPP	steel	No	515.20	---	1
16WSF16-BOP	2"	2"-11 1/2 NPTF	steel	No	722.40	---	1
16WSF16-SS-BOP *	2"	2"-11 1/2 NPTF	316 SS	No	6080.70	---	1
16WSBF16-BOP	2"	G2" BSPP	steel	No	722.40	---	1

WS-Series Blowout Prevention Safety Coupling (Nipple)



(Female Thread)

Wrench flats are pictured, non-flat fittings are standard.
(add -WF suffix to part number for flats)

Part Number	Body Size	Thread Size	Body Material	Wrench Flats	List Price	Bag Qty	Pack Qty
WS6F4-BOP	3/4"	1/2"-14 NPTF	steel	Yes	\$110.88	---	5
WS6F6-BOP	3/4"	3/4"-14 NPTF	steel	Yes	123.20	---	5
WS6F6-SS-BOP *	3/4"	3/4"-14 NPTF	316 SS	Yes	1666.78	---	5
WS6BF6-BOP	3/4"	G3/4" BSPP	steel	No	123.20	---	5
WS8F8-BOP	1"	1"-11 1/2 NPTF	steel	Yes	148.40	---	5
WS8F8-SS-BOP *	1"	1"-11 1/2 NPTF	316 SS	Yes	1930.21	---	5
WS8BF8-BOP	1"	G1" BSPP	steel	No	148.40	---	5
WS10F10-BOP	1-1/4"	1-1/4"-11 1/2 NPTF	steel	No	263.20	---	1
WS10F10-SS-BOP *	1-1/4"	1-1/4"-11 1/2 NPTF	316 SS	No	2479.01	---	1
WS10BF10-BOP	1-1/4"	G1-1/4" BSPP	steel	No	263.20	---	1
WS12F12-BOP	1-1/2"	1-1/2"-11 1/2 NPTF	steel	No	411.60	---	1
WS12F12-SS-BOP *	1-1/2"	1-1/2"-11 1/2 NPTF	316 SS	No	3027.81	---	1
WS12BF12-BOP	1-1/2"	G1-1/2" BSPP	steel	No	411.60	---	1
WS16F16-BOP	2"	2"-11 1/2 NPTF	steel	No	666.40	---	1
WS16F16-SS-BOP *	2"	2"-11 1/2 NPTF	316 SS	No	3943.52	---	1
WS16BF16-BOP	2"	G2" BSPP	steel	No	666.40	---	1

* Stainless steel models have an extended lead time as they are built-on-demand. Contact factory for details.