



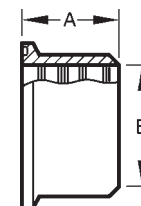
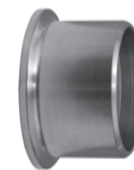
Clamp Ferrules

Roll-On Expanding Ferrules * - 14RMP



B

Tube O.D.	Dimensions		304	316L
	A	B	Part Number	Part Number
1"	.750	1.005	14RMP-G100	14RMP-R100
1½"	1.125	1.505	14RMP-G150	14RMP-R150
2"	1.312	2.005	14RMP-G200	14RMP-R200
2½"	1.375	2.505	14RMP-G250	14RMP-R250
3"	1.437	3.005	14RMP-G300	14RMP-R300
4"	1.500	4.005	14RMP-G400	14RMP-R400
6"	2.000	6.005	14RMP-G600	---

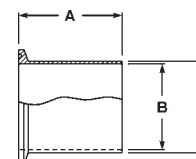


* For use when modifying or repairing existing on-site farm milk handling systems

316L Automatic Welding Ferrules - TL14AM7



Tube O.D.	Dimensions			Part Number
	A	B	C	
½"	1.750	.370	.500	TL14AM7-R50
¾"	1.750	.620	.750	TL14AM7-R75
1"	1.750	.870	1.000	TL14AM7-R100
1½"	1.750	1.370	1.500	TL14AM7-R150
2"	2.250	1.870	2.000	TL14AM7-R200
2½"	2.250	2.370	2.500	TL14AM7-R250
3"	2.250	2.870	3.000	TL14AM7-R300
4"	2.250	3.834	4.000	TL14AM7-R400



• Meets ASME BPE-2002 specifications

Light Tank Ferrules - 14WLMP



Tube O.D.	Dimensions			304	316L
	A	B	C	Part Number	Part Number
1"	3.000	.870	1.000	14WLMP-G100	14WLMP-R100
1½"	3.000	1.370	1.500	14WLMP-G150	14WLMP-R150
2"	3.000	1.870	2.000	14WLMP-G200	14WLMP-R200
2½"	3.000	2.370	2.500	14WLMP-G250	14WLMP-R250
3"	4.000	2.870	3.000	14WLMP-G300	14WLMP-R300
4"	4.000	3.834	4.000	14WLMP-G400	14WLMP-R400
6"	6.000	5.782	6.000	14WLMP-G600	14WLMP-R600
8"	6.000	7.760	8.000	---	14WLMP-R800
10"	6.000	9.782	10.000	---	14WLMP-R1000
12"	6.000	11.760	12.000	---	14WLMP-R1200

