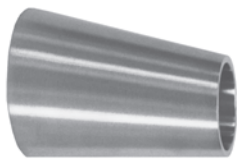




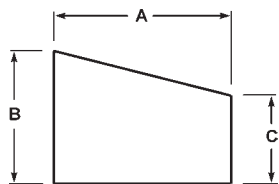
## Butt Weld Reducers

### Butt Weld Eccentric Reducers, #7 finish - B32W

Tube O.D.	Dimensions			Nom. Wall	304	316L
	A	B	C		Part Number	Part Number
3/4" x 1/2"	1.000	.750	.500	.065	---	B32W-R7550P
1" x 1/2"	2.000	1.000	.500	.065	---	B32W-R10050P
1" x 3/4"	1.000	1.000	.750	.065	---	B32W-R10075P
1 1/2" x 1/2"	4.000	1.500	.500	.065	---	B32W-R15050P
1 1/2" x 3/4"	3.000	1.500	.750	.065	---	B32W-R15075P
1 1/2" x 1"	2.000	1.500	1.000	.065	B32W-G150100P	B32W-R150100P
2" x 1/2"	6.000	2.000	.500	.065	---	B32W-R20050P
2" x 3/4"	5.000	2.000	.750	.065	---	B32W-R20075P
2" x 1"	4.000	2.000	1.000	.065	B32W-G200100P	B32W-R200100P
2" x 1 1/2"	2.000	2.000	1.500	.065	B32W-G200150P	B32W-R200150P
2 1/2" x 1 1/2"	4.000	2.500	1.500	.065	B32W-G250150P	B32W-R250150P
2 1/2" x 2"	2.000	2.500	2.000	.065	B32W-G250200P	B32W-R250200P
3" x 1"	8.000	3.000	1.000	.065	B32W-G300100P	---
3" x 1 1/2"	6.000	3.000	1.500	.065	B32W-G300150P	B32W-R300150P
3" x 2"	4.000	3.000	2.000	.065	B32W-G300200P	B32W-R300200P
3" x 2 1/2"	2.000	3.000	2.500	.065	B32W-G300250P	B32W-R300250P
4" x 1 1/2"	10.000	4.000	1.500	.083	B32W-G400150P	B32W-R400150P
4" x 2"	8.000	4.000	2.000	.083	B32W-G400200P	B32W-R400200P
4" x 2 1/2"	6.000	4.000	2.500	.083	B32W-G400250P	B32W-R400250P
4" x 3"	4.000	4.000	3.000	.083	B32W-G400300P	B32W-R400300P
6" x 3"	5.500	6.000	3.000	.109	B32W-G600300P	---
6" x 4"	5.500	6.000	4.000	.109	B32W-G600400P	---
8" x 4"	6.000	8.000	4.000	.120	B32W-G800400P	---
8" x 6"	6.000	8.000	6.000	.120	B32W-G800600P	---

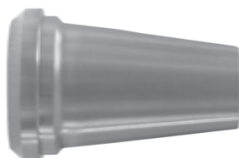


G

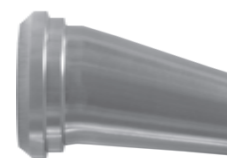


Note: #3 and #5 finishes are also available.

Other types of Butt weld reducers are available  
call Dixon Sanitary for information



B31P



B32P