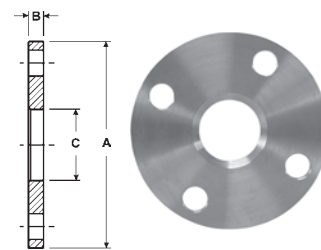




## Tube OD Flanges

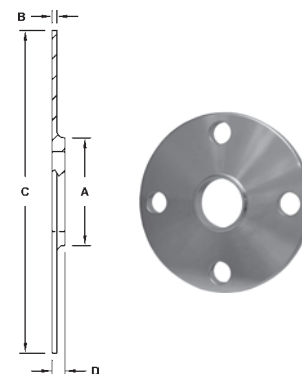
### Tube Flanges - B38SL

Tube O.D.	Dimensions			No. & Dia. Bolt Holes	Bolt Circle	304	316L
	A	B	C			Part Number	Part Number
1"	4.250	.375	1.063	4/.625	3.125	B38SL-G100	B38SL-R100
1½"	5.000	.375	1.563	4/.625	3.875	B38SL-G150	B38SL-R150
2"	6.000	.437	2.063	4/.750	4.750	B38SL-G200	B38SL-R200
2½"	7.000	.437	2.563	4/.750	5.500	B38SL-G250	B38SL-R250
3"	7.500	.500	3.063	4/.750	6.000	B38SL-G300	B38SL-R300
4"	9.000	.562	4.063	8/.750	7.500	B38SL-G400	B38SL-R400
6"	11.000	.562	6.063	8/.875	9.500	B38SL-G600	B38SL-R600
8"	13.500	.687	8.063	8/.875	11.750	B38SL-G800	B38SL-R800
10"	16.000	.687	10.063	12/1.00	14.125	B38SL-G1000	---



### Weld Neck Flanges - B38W

Tube O.D.	Dimensions				No. & Dia. Bolt Holes	Bolt Circle	304	316L
	A	B	C	D			Part Number	Part Number
1"	1.000	.375	4.250	.500	4/.625	3.125	B38W-G100	B38W-R100
1½"	1.500	.375	5.000	.500	4/.625	3.875	B38W-G150	B38W-R150
2"	2.000	.500	6.000	.625	4/.750	4.750	B38W-G200	B38W-R200
2½"	2.500	.500	7.000	.625	4/.750	5.500	B38W-G250	---
3"	3.000	.500	7.500	.625	4/.750	6.000	B38W-G300	B38W-R300
4"	4.000	.500	9.000	.625	8/.750	7.500	B38W-G400	B38W-R400
6"	6.000	.500	11.000	.625	8/.875	9.500	B38W-G600	---

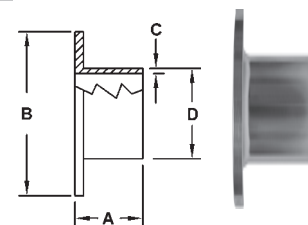


H

## Tube OD Welding Ends

### Type A Stub Ends - 14VB

Tube O.D.	Dimensions				316L Part Number
A	B	C	D		
1"	1.625	2.000	.065	1.000	14VB-R100
1½"	1.750	2.875	.065	1.500	14VB-R150
2"	1.500	3.625	.065	2.000	14VB-R200
2½"	2.000	4.125	.065	2.500	14VB-R250
3"	2.250	5.000	.065	3.000	14VB-R300
4"	2.625	6.187	.084	4.000	14VB-R400
6"	3.000	8.500	.109	6.000	14VB-R600
8"	3.000	10.625	.120	8.000	14VB-R800
10"	3.500	12.450	.109	10.000	14VB-R1000



### Stub Bases- B14UB

Tube O.D.	Dimensions				316L Part Number
A	B	C	D		
1"	1.000	.870	2.000	.253	B14UB-R100
2½"	2.500	2.370	4.125	.253	B14UB-R250
3"	3.000	2.870	5.000	.289	B14UB-R300

