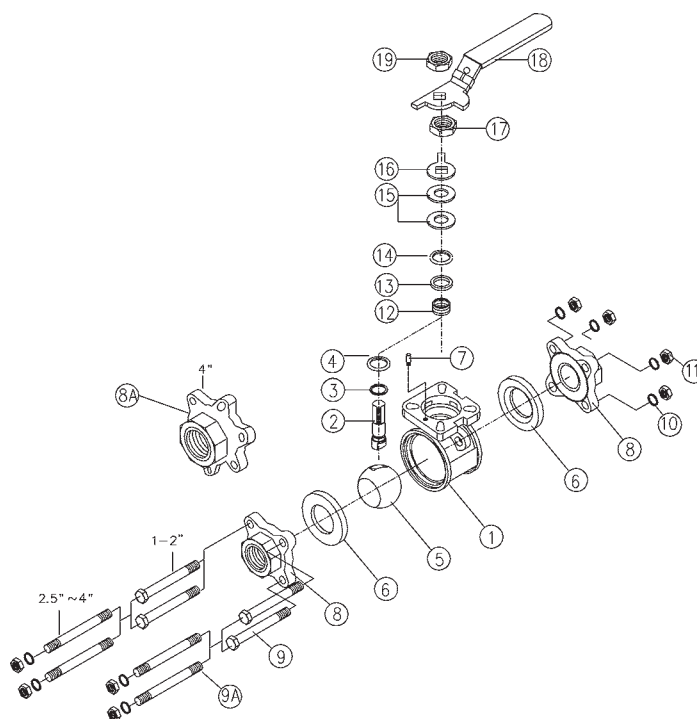


## 3 Piece Industrial Stainless Steel Ball Valve

### Materials List for BV2IG

Item	Description	Material	Qty		
			1/2" to 2"	2 1/2" to 3"	4"
1	body	CF8M stainless	1	1	1
2	stem	316 stainless	1	1	1
3	o-ring	Viton®	1	1	1
4	thrust washer	PTFE	1	1	1
5	ball	CF8M stainless	1	1	1
6	seat	PTFE	2	2	2
7	stop pin	316 stainless	1	1	1
8	end cap	CF8M stainless	2	2	n/a
8A	end cap	CF8M stainless	n/a	n/a	2
9	body bolt	304 stainless	4	n/a	n/a
9A	body bolt	304 stainless	n/a	4	6
10	bolt washer	304 stainless	4	8	12
11	bolt nut	304 stainless	4	8	12
12	stem packing	PTFE	2	2	2
13	gland washer	PTFE	1	1	1
14	gland bushing	304 stainless	1	1	1
15	Belleville washer	304 stainless	1	1	1
16	tab washer	304 stainless	1	1	1
17	stem nut	304 stainless	1	1	1
18	slide lock handle	304 stainless	1	1	1
19	handle nut	304 stainless	1	1	1



### Repair Kits for BV2IG

Repair Kit	
Size	Part Number
1/2"	BV-2I-GK050
3/4"	BV-2I-GK075
1"	BV-2I-GK100
1 1/4"	BV-2I-GK125
1 1/2"	BV-2I-GK150
2"	BV-2I-GK200
2 1/2"	BV-2I-GK250
3"	BV-2I-GK300
4"	BV-2I-GK400

Repair Kit contains:

- (2) PTFE seats
- (2) Viton® O-rings
- (1) PTFE thrust washer
- (2) PTFE stem packings

N