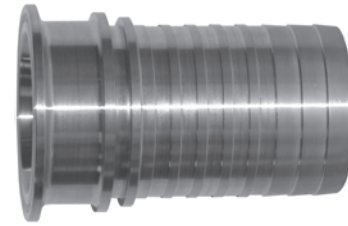




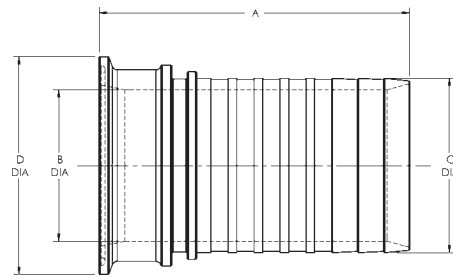
## Couplings

### 316 Stainless Sanitary Stems

- Sanitary style end
- Meets FDA and USDA sanitary standards
- Dixon sanitary crimp stems are only to be used with Dixon stainless steel crimp ferrules



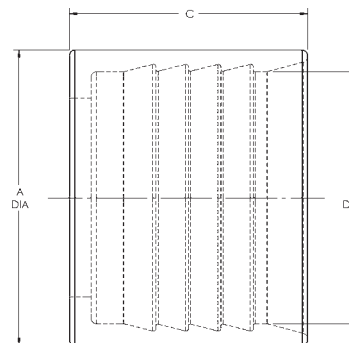
Hose Size	Dimensions				Part Number
	A	B	C	D	
1"	2.453	0.850	1.015	1.984	CSSR100
1½"	3.063	1.625	1.515	1.984	CSSR150
2"	3.594	1.750	2.000	2.531	CSSR200
3"	4.031	2.795	3.015	3.582	CSSR300
4"	4.188	3.750	4.050	4.682	CSSR400



### 304 Stainless Crimp Ferrules

- Manufactured in AISI 304 stainless steel
- Ferrules have a surface finish of 63 or better

Hose I.D.	Hose O.D. Range		Part #	Dimensions		
	From	To		A	B	C
1"	1-26/64"	1-28/64"	F16G-1453	1.703	1.453	1.375
	1-29/64"	1-31/64"	F16G-1500	1.750	1.500	1.375
	1-32/64"	1-34/64"	F16G-1547	1.797	1.547	1.375
	1-35/64"	1-37/64"	F16G-1594	1.844	1.594	1.375
	1-38/64"	1-40/64"	F16G-1641	1.891	1.641	1.375
1½"	1-58/64"	1-61/64"	F24G-1969	2.219	1.969	2.000
	1-62/64"	2-1/64"	F24G-2031	2.281	2.031	2.000
	2-2/64"	2-5/64"	F24G-2094	2.344	2.094	2.000
	2-6/64"	2-9/64"	F24G-2156	2.406	2.156	2.000
2"	2-30/64"	2-33/64"	F32G-2531	2.781	2.531	2.500
	2-34/64"	2-37/64"	F32G-2594	2.844	2.594	2.500
	2-38/64"	2-41/64"	F32G-2656	2.906	2.656	2.500
	2-42/64"	2-45/64"	F32G-2719	2.969	2.719	2.500
3"	3-39/64"	3-42/64"	F48G-3625	3.875	3.625	2.875
	3-40/64"	3-43/64"	F48G-3688	3.938	3.688	2.875
	3-44/64"	3-47/64"	F48G-3750	4.000	3.750	2.875
	3-48/64"	3-51/64"	F48G-3813	4.063	3.813	2.875
	3-52/64"	3-55/64"	F48G-3875	4.125	3.875	2.875
4"	3-56/64"	3-59/64"	F48G-3938	4.188	3.938	2.875
	4-40/64"	4-43/64"	F64G-4688	5.064	4.688	3.000
	4-44/64"	4-47/64"	F64G-4750	5.126	4.750	3.000
	4-48/64"	4-51/64"	F64G-4813	5.189	4.813	3.000
	4-52/64"	4-55/64"	F64G-4875	5.251	4.875	3.000
	4-56/64"	4-59/64"	F64G-4938	5.314	4.938	3.000



T