

HIGH PERFORMANCE WORM DRIVE CLAMPS



Premium POW'R-GEAR® and TRIMAX® clamps are designed for high vibration and stubborn leakage applications such as industrial machinery, heavy truck, farm and off-road equipment engines.

Featuring an extra wide 5/8" band and a wide profile housing that provides maximum engagement of screw threads to band, POW'R-GEAR® and TRIMAX® clamps are engineered to deliver exceptionally high rates of band tension to handle even the toughest sealing jobs.

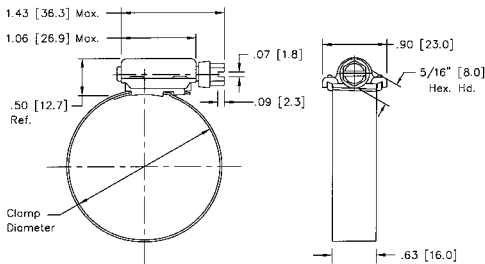
Ideal POW'R-GEAR® 60 Series/Tridon TRIMAX® 850 Series

The premier clamp in the industry.

Screw: 5/16" hex-head. 410 stainless steel.
 Band: 5/8" design. 0.028" thick. 300 grade stainless steel.
 Housing: 0.060" thick. 300 grade stainless steel.

Ideal 300 Grade Stainless Steel POW'R-GEAR® 6P Series (Tridon N/A)

All 300 grade stainless steel construction.
 Screw: 5/16" hex-head. 305 stainless steel.
 Band: 5/8" design. 0.028" thick. 300 grade stainless steel.
 Housing: 0.060" thick. 300 grade stainless steel.



Measurements in illustrations are in inches (millimeters)

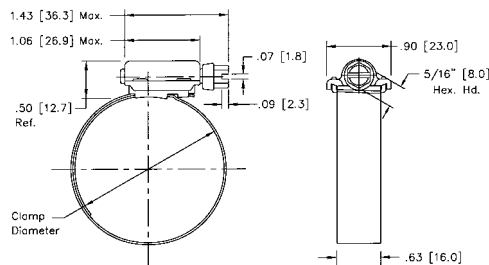
Ideal Lined POW'R-GEAR® 6L Series Tridon TRIMAX® 843 Series

For maximum protection of soft hoses. Protective liner prevents extrusion and shearing of hose through band notches. Extended band design prevents liner from skewing during installation.

Screw: 5/16" hex-head. 410 stainless steel.
 Band Liner: 5/8" design. 0.028" thick. 300 grade stainless steel.
 Housing: 0.060" thick. 300 grade stainless steel.

Ideal 300 Grade Stainless Steel Lined POW'R-GEAR® 6M Series (Tridon N/A)

All 300 grade stainless steel construction.
 Screw: 5/16" hex-head. 305 stainless steel.
 Band Liner: 5/8" design. 0.028" thick. 300 grade stainless steel.
 Housing: 0.060" thick. 300 grade stainless steel.



N/A - Not Available