

## 200 SERIES CYLINDRICAL / O-BORE

Cylindrical fenders are typically hung by running chain through the bore. These durable fenders come in various diameters to meet many different applications and conditions.

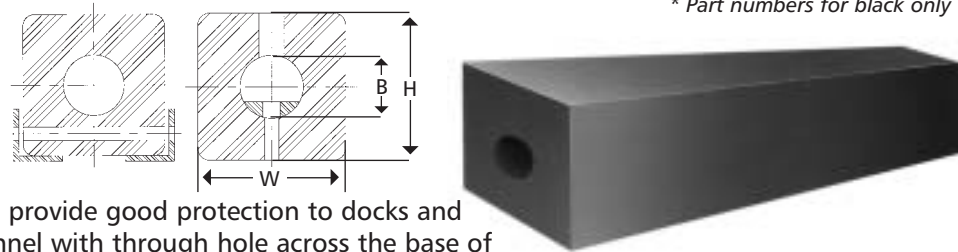


CODE NO.	DURAMAX PART NO.	OUTSIDE DIAMETER (D)	BORE (B)	WT./FT.	LENGTH UP TO
DB-202	802020201	3"	1"	3.2 LBS.	60 FT.
DB-203	802020301	3"	1 1/2"	2.7 LBS.	60 FT.
DB-205	802020501	5"	2 1/2"	8 LBS.	30 FT.
DB-206	802020601	7"	3"	16 LBS.	20 FT.
DB-207	802020701	7"	3 1/2"	15.5 LBS.	20 FT.
DB-208	802020801	8"	4"	18.2 LBS.	20 FT.
DB-210	802021001	10"	5"	32 LBS.	20 FT.
DB-212**	802021201	12"	6"	46 LBS.	20 FT.
DB-215	802021501	15"	7 1/2"	67 LBS.	16 FT.
DB-218	802021801	18"	9"	96.7 LBS.	10 FT.

\*\* Cross section also extruded in white and non-marking grey  
\* Confirm piece length with Duramax Marine prior to ordering  
\* Part numbers for black only

## 300 SERIES RECTANGULAR / O-BORE

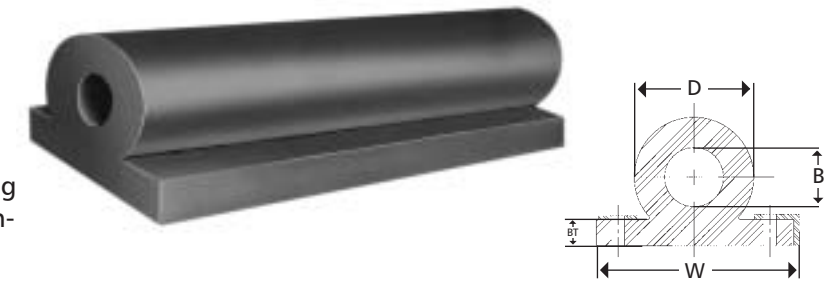
Mounted vertically or horizontally to provide good protection to docks and vessels. Typical mounting is in a channel with through hole across the base of fender. Manufactured in black, non-marking grey and white EPDM where noted.



CODE NO.	DURAMAX PART NO.	HEIGHT (H)	WIDTH (W)	BORE (B)	WT./FT.	LENGTH UP TO
DB-302	802030201	2"	4"	SOLID	3.9 LBS.	60 FT.
DB-303	802030301	3 1/2"	4 1/2"	1"	8 LBS.	60 FT.
DB-304	802030401	5"	5"	2 1/2"	9.8 LBS.	60 FT.
DB-305	802030501	5"	6 1/2"	2 1/2"	13 LBS.	40 FT.
DB-305A	802030511	5 1/2"	6"	2 1/2"	13.9 LBS.	40 FT.
DB-306**	802030601	6"	6 1/2"	2 1/2"	17.4 LBS.	20 FT.
DB-306A	802030611	6"	6"	2 7/8"	14.6 LBS.	20 FT.
DB-306B	802030621	6"	7"	2 1/2"	18 LBS.	20 FT.
DB-307	802030701	7"	10"	3"	34.1 LBS.	20 FT.
DB-307A	802030711	7"	10"	3 1/2"	30 LBS.	20 FT.
DB-308	802030801	8"	8"	3"	28.2 LBS.	20 FT.
DB-309	802030901	8"	10"	3"	39.5 LBS.	20 FT.
DB-309A	802030911	9"	10"	SOLID	50.7 LBS.	20 FT.
DB-310	802031001	10"	10"	4"	42.4 LBS.	20 FT.
DB-311**	802031101	10"	12"	4"	60 LBS.	20 FT.
DB-312**	802031201	12"	12"	5"	65 LBS.	20 FT.
DB-313**	802031301	12"	12"	4"	68.5 LBS.	20 FT.

## 400 SERIES WING TYPE O-BORE

Designed for easy attachment to vessels and docks. Drill and bolt fender to structure using the integral wings. Eliminates need for mounting holes on the facing. Manufactured in black, non-marking grey and white EPDM where noted.



CODE NO.	DURAMAX PART NO.	BASE WIDTH (W)	BASE THICKNESS (BT)	OUTSIDE DIAM. (D)	BORE	WT./FT.	LENGTH UP TO
DB-404**	802040401	4"	1/2"	2 1/2"	1"	3.5 LBS.	60 FT.
DB-405	802040501	5"	1/2"	2 1/2"	1"	4 LBS.	60 FT.
DB-406	802040601	6"	3/4"	3"	1"	5.3 LBS.	60 FT.
DB-407	802040701	6 1/2"	1"	4"	2"	7 LBS.	60 FT.
DB-408	802040801	6 1/2"	1"	4"	1"	8.9 LBS.	60 FT.
DB-409**	802040901	9"	1 1/2"	6"	3"	14.4 LBS.	20 FT.
DB-410**	802041001	9 1/2"	1 1/2"	6"	2"	16.2 LBS.	20 FT.
DB-412**	802041201	12"	2"	8"	4"	27 LBS.	20 FT.
DB-416	802041601	16"	2 1/2"	10"	4"	46 LBS.	20 FT.
DB-418	802041801	18"	3"	12"	6"	61 LBS.	15 FT.

## WING TYPE SOLID BORE



CODE NO.	DURAMAX PART NO.	BASE WIDTH (W)	BASE THICKNESS (BT)	RADIUS (R)	WT./FT.	LENGTH UP TO
DB-460	802046001	10"	1 1/4"	4"	13.6	20 FT.

## WING TYPE D-BORE



CODE NO.	DURAMAX PART NO.	BASE WIDTH (W)	BASE THICKNESS (BT)	OUTSIDE DIAM. (D)	WALL THICKNESS (WT)	WT./FT.	LENGTH UP TO
DB-440**	802044001	9 1/2"	1 1/4"	6"	1"	14.9 LBS.	20 FT.

\*\* Cross section also extruded in white and non-marking grey  
\* Confirm piece length with Duramax Marine prior to ordering  
\* Part numbers for black only