

BIGJAKE[®] AA+ HEAVY-DUTY SIDE SPLIT



1700

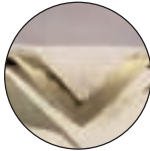
Full Feature Gunn
Pattern Leather Palm
Sewn with KEVLAR[®]

1700 2 3/4" Safety Cuff
Sizes: L, M, S, XL

1700LU 2 3/4" Safety Cuff - No Palm Lining
Sizes: L, M, S, XL

1710 4 1/2" Gauntlet Cuff
Sizes: L, M, XL

1730 4 1/2" Duck Gauntlet Cuff
Sizes: L, S, XL



The Rubberized Safety and Gauntlet Cuffs come standard on all styles except the 1730 Duck Cuff which is great for laundering.



1711

Double Leather Palm, Index
Finger & Thumb

1711 2 3/4" Safety Cuff
Size: XL

1712 4 1/2" Gauntlet Cuff
Size: M, XL



1713

3/4 Leather Back

1713 2 3/4" Safety Cuff

1714 4 1/2" Gauntlet Cuff

Full Leather Back

1717 2 3/4" Safety Cuff

1718 4 1/2" Gauntlet Cuff

1715

Double Leather Palm, Fingers & Thumb

1715 2 3/4" Safety Cuff
Size: XL

1716 4 1/2" Gauntlet Cuff
Size: XL