

PREMIUM RAINWEAR

HARVESTER



900JH JACKET

Jacket with attached hood and snap storm fly front.
S-X4 Yellow
907JH S-X4 Black



900JH

900BF BIB PANTS

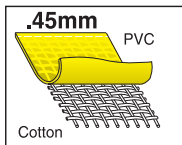
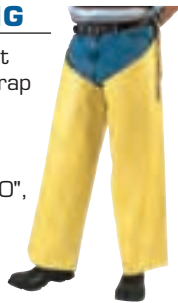
Bib pants, plain front, full elastic suspenders, metal take up snaps at waist and ankles.
S-X4 Yellow
907BF S-X3 Black



900BF

900LEG LEGGING

Legging, inseam 27", out seam 32". Adjustable strap sewn into out seam.
Sold per pair.
Yellow
900LEGL inseam 30", out seam 36".
Yellow



FEATURES

- Double heat welded seams for strength
 - Strong metal snaps for durability
 - Our thickest suit
- .45mm special blend of PVC/Cotton*

NAVIGATOR



550J JACKET

Jacket with detachable hood.
S-X3 Yellow



550J

550BP BIB PANTS

Bib pants with snap fly front, quick release suspenders and full elastic suspenders.
S-X3 Yellow



550BP

550C RAINCOAT

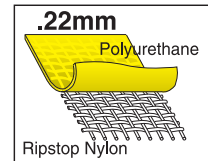
49 inch coat with corduroy tip collar, cape-vented back, underarm air vents, badge holder, slash pockets and detachable hood.
S-X3 Yellow



550C

FEATURES

- High quality nylon taffeta fabric with a non-breathable polyurethane over nylon
 - Flame resistant
 - Double sewn and taped seams
 - Quick release suspenders
- .22mm Polyurethane/Nylon*



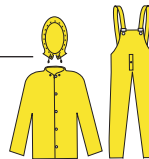
PLUS RAINWEAR

CYCLONE



4003 SUIT

Complete 3 piece suit; jacket with detachable hood and bib pants.
S-X3 Yellow



4003

400H HOOD

Detachable hood.
One Size Yellow

400J JACKET

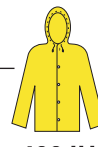
Jacket with detachable hood and storm fly snap front.
M-X3 Yellow



400J

400JH JACKET

Jacket with attached hood and storm fly snap front.
S-X2 Yellow



400JH

400BP BIB PANTS

Bib pants with fly and take up snaps at waist and ankles.
S-X3 Yellow



400BP

400PW WAIST PANTS

Elastic waist pants with fly and take up snaps at ankles.
S-X3 Yellow



400PW

FEATURES

- Wave-lock nylon material coated on both sides with heavy weight PVC
 - Flame resistant
 - Excellent tear and abrasion resistance
 - Offers excellent resistance to most industrial oil, acids, and chemicals
 - Thickest wave lock material available in the industry
- .35mm PVC/Nylon/PVC*