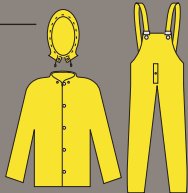


PLUS RAINWEAR

WIZARD

3003 SUIT

Complete 3 piece suit; jacket with detachable hood and bib pants. S-X5 Yellow



3103 SUIT

Complete 3 piece suit; jacket with detachable hood and bib pants with stitched and taped seams. M-X3 Yellow

3003
3103



300CH COAT

49 inch coat with attached hood. M-X3 Yellow



300CH

300C COAT

49 inch coat with detachable hood. S-X5 Yellow

300C

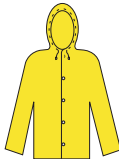
300J JACKET

Jacket with detachable hood. S-X5 Yellow

300JH S-X3 Attached Hood



300J
310J



300JH
310JH

310J JACKET

Jacket with detachable hood with stitched and taped seams. S-X3 Yellow

310JH S-X3 Attached Hood

320J JACKET

Jacket features detachable hood, rounded corduroy collar, 2 patch pockets with flaps and black snap closures. The seams are stitched and taped. M-X4 Yellow



320J

300BP BIB PANTS

Bib pants with fly. S-X5 Yellow
300BF S-X3 No Fly



300BP
310BP

310BP BIB PANTS

Bib pants with fly with stitched and taped seams. M-X3 Yellow

360C 60" RIDER COAT

Coat with detachable hood S-X3 Yellow



300H

360C

300H HOOD

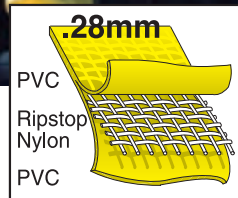
One Size Yellow



FEATURES

- Double coated PVC over 210 denier nylon scrim material
- "Rip-Stop" material provides excellent resistance to snags and tears
- Flame resistant
- Protects against most chemicals, oils & acids
- Available with stitched and taped seams

.28mm PVC/Nylon/PVC



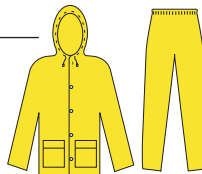
VALUE RAINWEAR

EAGLE



0602 SUIT

Complete 2 piece suit; jacket with attached hood and elastic waist pants. S-X2 Yellow



0602

FEATURES

- .15mm single ply PVC
- Heavier than standard disposable
- Versatile garment at an affordable price

.15mm PVC Film

