

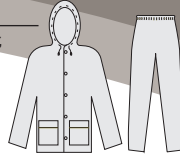
# VALUE RAINWEAR

## SQUALL



### 0722 SUIT

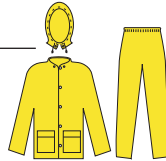
Complete 2 piece suit; jacket with attached hood, zipper front, cape-vented back, underarm air vents and elastic waist pants.  
S-X5 Clear



0722

### 0703 SUIT

Complete 3 piece suit; jacket with detachable hood and bib pants.  
M-X5 Yellow



0703

### 070J JACKET

Jacket with detachable hood.  
S-X2 Yellow



070J



070BP

### 070BP BIB PANTS

Bib pants with fly.  
S-X3 Yellow

### 072C RAINCOAT

49 inch raincoat with detachable hood.  
S-X5 Clear



072C

072V

### 072V COAT

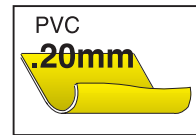
58" Coat no hood  
M-X5

### 072HR HOOD

072C hood with orange/silver reflective stripe  
One size

#### FEATURES

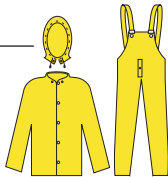
- Single ply PVC
  - Non conductive hardware
  - Economically priced
  - Excellent for plant turnarounds
- .20mm single ply PVC



## STOWAWAY

### 1003 SUIT

Complete 3 piece suit; jacket with detachable hood, cape-vented back, underarm air vents and bib pants.  
S-X5 Yellow



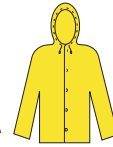
1003

### 100J JACKET

Jacket with detachable hood.  
S-X3 Yellow



100J



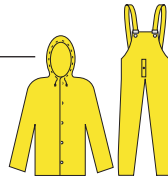
100JH

### 100JH JACKET

Jacket with attached hood.  
M-X3 Yellow

### 1002 SUIT

Complete 2 piece suit; jacket with attached hood and bib pants.  
M-X4 Yellow



1002

### 100BP BIB PANTS

Bib pants with fly.  
S-X3 Yellow



100BP



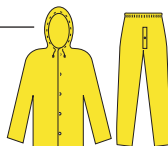
100PW

### 100PW WAIST PANTS

Elastic waist pants.  
S-X3 Yellow

### 1202 SUIT

Complete 2 piece suit; jacket with attached hood, cape-vented back, underarm air vents and elastic waist pants.  
S-X3 Yellow



1202

### 100C RAINCOAT

49 inch raincoat with detachable hood.  
S-X2 Yellow



100C

#### FEATURES

- .25mm-2 sheets of PVC laminated together
- 2-ply construction provides excellent flexibility
- Jacket and coat have a cape-vented back for added comfort

.25mm 2 ply PVC

