

# SPUNBOND/POLYPROPYLENE



## 12WPC COVERALLS

Coverall features a zipper front with open wrists and ankles.

White M-X4

## 12WPCE COVERALLS

Coverall features a zipper front with elastic sleeves and ankles.

White L-X4

## 12WPCA COVERALLS

Coverall features a zipper front with elastic in sleeves, attached hood with elastic face opening, attached boots.

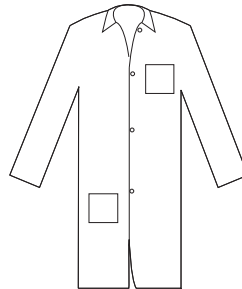
White L-X4

## 12WPL LAB COAT

Coat features turn down collar, open sleeves, two pockets and button closure. 25/case

12WPL White, S-X4

12BNPL Blue, no pockets, L-X2



12WPL

## 04WBC BOUFFANT CAP

.40 oz. breathable polypropylene cap

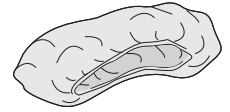
1000/case

Medium—21", Large—24"

04WBC White, M-L

04BBC Blue, M-L

04GBC Green, M-L



## 04WPC PLEATED BOUFFANT CAP

.40 oz. breathable polypropylene cap

1000/case

04WPC White, M-L

04BPC Blue, M

## 04WBG BEARD GUARD

18" long beard protector is 9"

wide with a 10" elastic string

One Size White 1000 case



## S125E4 SLEEVE GUARD

18" sleeve has elastic at both ends

200/case, one size

S125E4 White

S123E4 Blue



## 12BNSC SHOE COVER

Non-skid. 300/case

One size, Blue.

## FEATURES

- 1.25 oz. Polypropylene
- Excellent for splash protection from water and non oil based liquids
- Breathable comfort and ease of disposal
- Serged seams
- Sold in case lots

# BOOTS



## BBR110

14" Black rubber boot.  
5 durable metal buckles.  
Full knit lining.  
Sizes: 7-16  
6 pairs/case

## BYR100

17" Yellow rubber slush boot.  
Adjustable top strap.  
Sizes: 7-16  
10 pairs/case

