

# OETIKER Quick-Connectors

Product Group **200**



## Features

- Innovative connection solution
- Compact design through optimised use of material
- Can be installed and removed many times
- Optimised cross-section for maximum flow
- Tube end can be utilised as a connecting element
- Plug/tube is free to rotate
- Cracking pressure up to 1100 bar
- Fast, simple and safe installation
- Customer-specific tool for removal



OETIKER Quick-Connectors are a new system for the fast, safe connection of fluid supply lines. They can be developed for specific applications and supplied in different versions to suit customers' requirements. Because they can be fitted without tools, OETIKER Quick-Connectors are the optimal connector for numerous industrial applications. OETIKER Quick-Connectors drastically reduce installation times.

OETIKER Quick-Connectors are suitable for applications that make severe demands – whether as a connection element for safety-relevant components, or for installation on air conditioners, oil coolers, brake lines, turbo-units, etc.

## Material

– **200** Body:

Material no. 1.0737 / UNS G12144

Circlip:

Material no. 1.4310 / UNS S30100

Seal:

NBR

Other materials and seal variants available on request.

*Size range*

DN6 - DN18

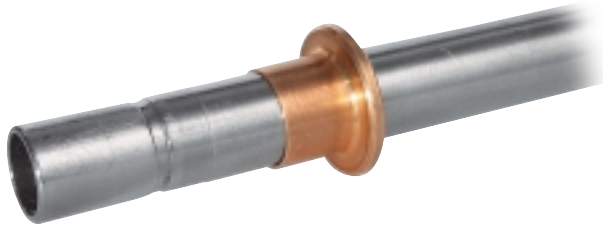
## Connection / Disconnection

To make the connection, push the grooved tube into the Quick-Connector until it engages.

To disconnect, push the disconnection sleeve / tool into the Quick-Connector to the stop, hold it in this position, and pull out the tube.

For detailed technical information, see Technical Data Sheet.

For detailed information, please request the Technical Data Sheet for this OETIKER product group. Send your sample parts and all relevant information for your specific application to OETIKER, and you will receive our recommendation for product type, diameter, and method of installation.



Removal sleeve loose on grooved tube



Customer-specific tool for removal

## Application Example

Quick-Connector as supply connection for oil or cooling-water lines