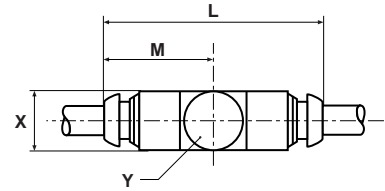


B

CORPBD Double Banjo Body Only

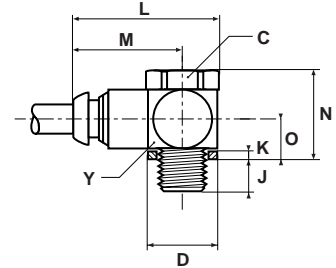
PART NO.	TUBE SIZE	PART N° SINGLE BOLT	PART N° STACKING BOLT	L	M	X	Y
CORPB4D5	4	SC8UM5-4	SC8UDM5-4	38	19.0	10	10
CORPB4D10	4	SC4U1/8-4	SC4UD1/8-4	45	22.5	14	14
CORPB6D10	6	SC4U1/8-4	SC4UD1/8-4	46	23.0	14	14
CORPB6D13	6	SC4U1/4-6	SC4UD1/4-6	49	24.5	14	17
CORPB8D10	8	SC4U1/8-4	SC4UD1/8-4	48	24.0	14	14



COR8PB/COR4PB Single Banjo Assembled

PART NO.	TUBE SIZE	BSPP	C HEX	D	J	K	L	M	N	O	Y
COR8PB4M5	4	M5x0.8	8	8.2	4.5	1.0	24.0	19.0	13.5	6.0	10
COR4PB4-1/8	4	1/8	14	14.4	6.0	1.5	29.5	22.5	19.5	8.5	14
COR4PB6-1/8	6	1/8	14	14.4	6.0	1.5	30.0	23.0	19.5	8.5	14
COR4PB6-1/4	6	1/4	17	18.4	9.0	2.0	33.0	24.5	21.0	9.0	17
COR4PB8-1/8	8	1/8	14	14.4	6.0	1.5	31.0	34.0	19.5	8.5	14
COR4PB8-1/4	8	1/4	17	18.4	9.0	2.0	34.0	25.5	21.0	9.0	17
COR4PB10-3/8	10	3/8	22	21.6	9.0	2.5	43.0	32.0	25.5	11.0	22

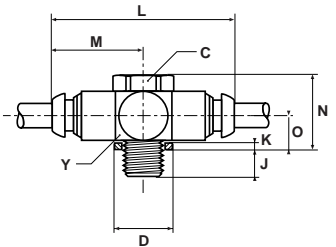
These parts are delivered complete with sealing washer.



COR8PBD/COR4PBD Double Banjo Assembled

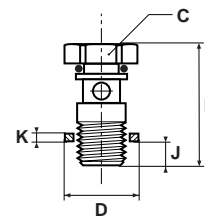
PART NO.	TUBE SIZE	BSPP	C HEX	D	J	K	L	M	N	O	Y
COR8PB4DM5	4	M5x0.8	8	8.2	4.5	1.0	38	19.0	13.5	6.0	10
COR4PB4D1/8	4	1/8	14	14.4	6.0	1.5	45	22.5	19.5	8.5	14
COR4PB6D1/8	6	1/8	14	14.4	6.0	1.5	46	23.0	19.5	8.5	14
COR4PB6D1/4	6	1/4	17	18.4	9.0	2.0	49	24.5	21.0	9.0	17
COR4PB8D1/8	8	1/8	14	14.4	6.0	1.5	48	24.0	19.5	8.5	14

These parts are delivered complete with sealing washer.



SC8U/SC4U Single Banjo Bolt with Seals BSPP

PART NO.	BSPP	C HEX	D	J	K	L
SC8UM5-4	M5x0.8	8	8.2	4.5	1.0	18.5
SC4U1/8-4	1/8	14	14.4	6.0	1.5	25.5
SC4U1/4-6	1/4	17	18.4	9.0	2.0	30.0
SC4U3/8-10	3/8	22	21.6	9.0	2.5	34.5



SC8UD/SC4UD Stacking Banjo Bolt with Seals BSPP

PART NO.	BSPP	C HEX	D	J	K	L
SC8UDM5-4	M5x0.8	8	8.2	4.5	1.0	29.5
SC4UD1/8-4	1/8	14	14.4	6.0	1.5	41.0
SC4UD1/4-6	1/4	17	18.4	9.0	2.0	46.0

