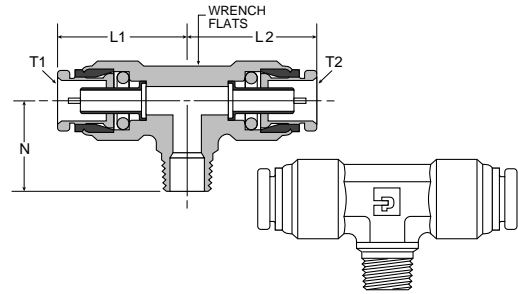


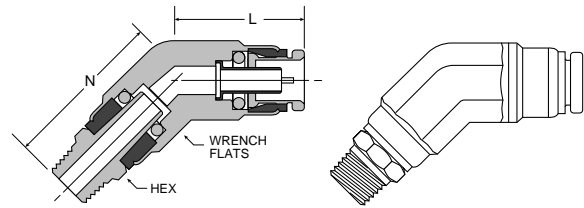
Male Branch Tee Non-Swivel 172PMTNS

PART NO.	TUBE 1 SIZE	TUBE 2 SIZE	PIPE THREAD	L1	L2	N	WRENCH FLATS
172PMTNS-4-2	1/4	1/4	1/8	.91	.91	.78	1/2
172PMTNS-6-4	3/8	3/8	1/4	1.21	1.21	.97	5/8
172PMTNS-6-4-4	3/8	1/4	1/4	1.21	.93	.97	5/8
172PMTNS-6-6	3/8	3/8	3/8	1.21	1.21	.97	5/8
172PMTNS-6-8	3/8	3/8	1/2	1.17	1.17	1.26	7/8
172PMTNS-8-6	1/2	1/2	3/8	1.28	1.28	1.06	7/8
172PMTNS-8-6-8	1/2	3/8	1/2	1.25	1.25	1.25	7/8
172PMTNS-8-8	1/2	1/2	1/2	1.34	1.34	1.25	7/8



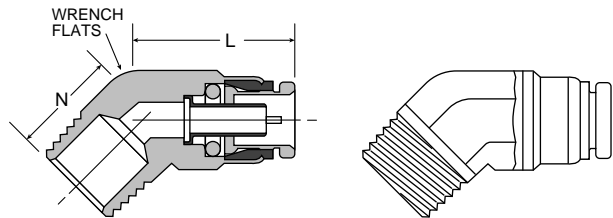
Male Elbow Swivel 45° 179PMT

PART NO.	TUBE SIZE	PIPE THREAD	L	N	HEX	WRENCH FLATS
179PMT-4-2	1/4	1/8	.79	1.16	7/16	9/16
179PMT-4-4	1/4	1/4	.89	1.46	9/16	9/16
179PMT-6-2	3/8	1/8	.99	1.44	5/8	3/4
179PMT-6-4	3/8	1/4	.99	1.61	5/8	3/4
179PMT-6-6	3/8	3/8	.99	1.61	5/8	3/4
179PMT-8-4	1/2	1/4	1.20	1.70	5/8	7/8
179PMT-8-6	1/2	3/8	1.20	1.78	3/4	7/8
179PMT-8-8	1/2	1/2	1.20	1.93	7/8	7/8



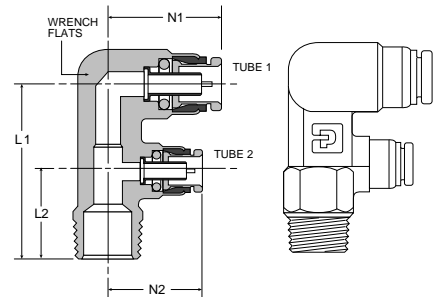
Male Elbow Non-Swivel 45° 179PMTNS

PART NO.	TUBE SIZE	PIPE THREAD	L	N	WRENCH FLATS
179PMTNS-4-2	1/4	1/8	.80	.56	9/16
179PMTNS-4-4	1/4	1/4	.80	.75	9/16
179PMTNS-6-2	3/8	1/8	.99	.55	3/4
179PMTNS-6-4	3/8	1/4	.99	.73	3/4
179PMTNS-6-6	3/8	3/8	.99	.73	3/4
179PMTNS-8-4	1/2	1/4	1.28	.81	13/16
179PMTNS-8-6	1/2	3/8	1.28	.81	13/16
179PMTNS-8-8	1/2	1/2	1.28	1.06	13/16
179PMTNS-10-6	5/8	3/8	1.22	.88	1 1/16
179PMTNS-10-8	5/8	1/2	1.22	1.00	1 1/16
179PMTNS-12-8	3/4	1/2	1.41	1.25	1 5/16



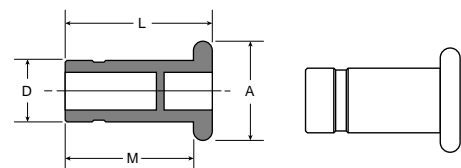
Dual port 90° male elbow non-swivel 189PMT

PART NO.	TUBE 1 SIZE	TUBE 2 SIZE	PIPE THREAD	L1	L2	N1	N2	WRENCH FLATS
189PMT4-4-4	1/4	1/4	1/4	1.91	.89	.95	.95	5/8
189PMT6-4-6	3/8	1/4	3/8	2.38	1.00	1.19	1.12	3/4
189PMT10-4-6	5/8	1/4	3/8	2.38	1.00	1.28	1.12	3/4
189PMT10-6-6	5/8	3/8	3/8	2.38	1.00	1.26	1.18	3/4



Push-To-Connect Fitting Plug 639PM/639PMT

PART NO.	TUBE SIZE	L	M	A	D
639PM-5/32BL	5/32	1.09	1.00	.39	.156
639PMT-4	1/4	1.14	.96	.48	.250
639PMT-6	3/8	1.33	1.15	.67	.375
639PMT-8	1/2	1.33	1.15	.81	.500



Specify color when ordering Black (BL) or Blue (BU), example 639PMT-4BU

Note: use appropriate PM/PMT style connection as determined by part number.

[†] U.S. Patent No. 5,683,120