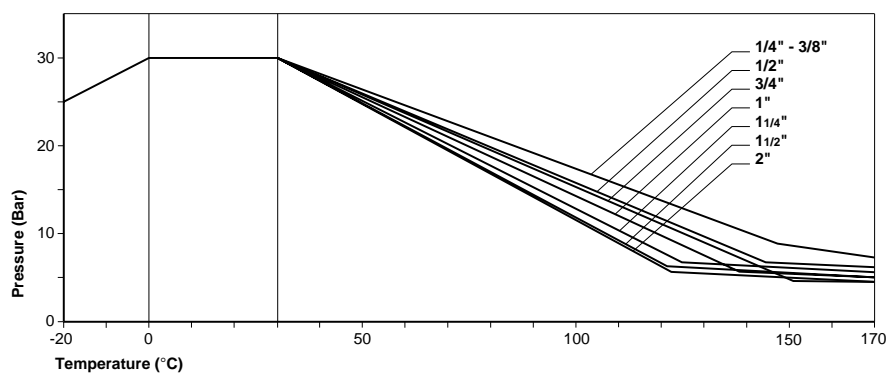


Parker Metric Ball Valves Series BVGC

Principle

Parker BVGC series economy ball valves are designed for use in a wide variety of fluid applications. Available with BSPP female/female* short threads to ISO-228, they are full flow valves giving minimum pressure drop. The BVGC series has a double PTFE seal on the ball enabling the valve to be used with flow in either direction. All seals are treated with a silicone free lubricant enabling the valves to be used in water-based paint spray applications. BVGC series valves have an adjustable PTFE packing gland for easy maintenance and longer service life. For operator safety the BVGC series valves are fitted with anti-extrusion stems to prevent blow out and all valves are 100% pressure tested twice to ensure zero leakage. For other thread configurations please consult your Parker sales engineer.

Operating pressures and temperatures

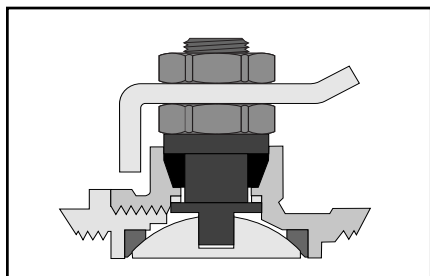


N.B. This chart gives general information. Only testing under operating conditions will finally determine which valve should be selected.

Technical Features

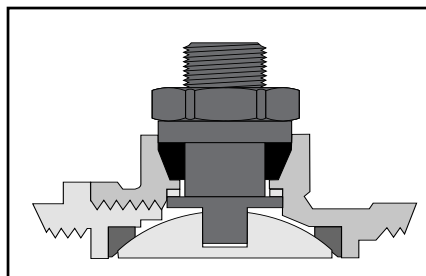
BODY	LEVER HANDLE	COMPACT HANDLE	ANTI EXTRUSION STEM	STEM PACKAGING GLAND	BALL	ANTI FRICTION RING	FORCING NUT	THREADS
Brass Nickel Plated to DIN 17660 and UNI 5705 Spec.	Carbon Steel with Yellow PVC Coating	Aluminum with Yellow Epoxy Coating	Brass Nickel Plated	PTFE	Brass Chrome Plated	PTFE	Brass Nickel Plated	1/4" to 2" BSPP to I SO 228/ DIN 259

Advantages



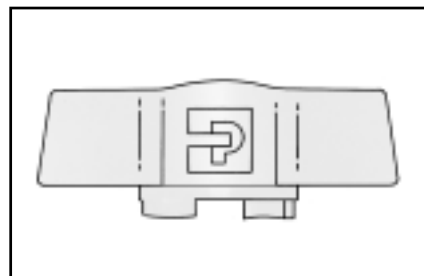
Adjustable packing

The PTFE packing gland and adjustable washer are designed to give longer service life and lower operating torques.



Anti extrusion stem

The BVGC series ball valves are fitted with an anti-extrusion stem to prevent blow out in the case of pressure peaks.



Compact handle

For applications where space is at a premium, the BVGC series valve is available with a compact handle in sizes up to 1".