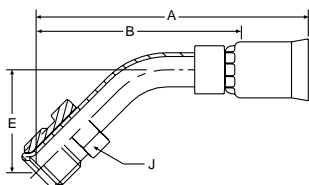


INDUSTRIAL 91N FITTINGS

16791N Male Inverted Swivel 45° Elbow



91N Series Permanent

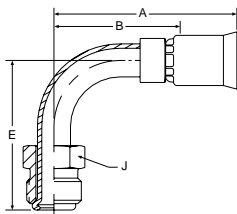
*Part Number	C	Thread Size	Inch	Tube Size	A		Cutoff Allow. B		E		J Hex
				Inch	Inch	MM	Inch	MM	Inch	MM	Inch
16791N-4-4	+	7/16-24	-4	1/4	2.05	52	1-1/2	38	0.63	16	7/16
16791N-5-5	+	1/2-20	-5	5/16	2.48	63	1-7/8	48	0.71	18	1/2
16791N-6-6	+	5/8-18	-6	3/8	2.60	66	1-15/16	49	0.96	24	5/8
16791N-8-8	+	3/4-18	-8	1/2	2.85	72	2-1/8	54	0.90	23	3/4
16791N-10-10	+	7/8-18	-10	5/8	3.30	84	2-5/8	67	1.02	43	7/8
16791N-12-12	+	1-1/16-16	-12	3/4	3.64	58	2-13/16	71	1.15	29	1-1/16

* Steel tube, nipple, nut and shell.

B – Brass nipple, brass shell.

C – All components 303 stainless steel.

16991N Male Inverted Swivel 90° Elbow



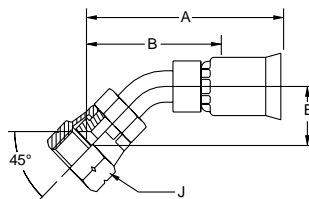
91N Series Permanent

*Part Number	C	Thread Size	Inch	Tube Size	A		Cutoff Allow. B		E		J Hex
				Inch	Inch	MM	Inch	MM	Inch	MM	Inch
16991N-4-4	+	7/16-24	-4	1/4	1.72	44	1-3/16	30	1.19	30	7/16
16991N-5-5	+	1/2-20	-5	5/16	1.98	50	1-3/8	35	1.65	42	1/2
16991N-5-6 (+)	+	1/2-20	-6	3/8	2.03	52	1-7/16	37	1.65	42	1/2
16991N-6-6	+	5/8-18	-6	3/8	2.08	53	1-7/16	37	1.70	43	5/8
16991N-8-8	+	3/4-18	-8	1/2	2.18	55	1-1/2	38	1.87	43	3/4
16991N-10-10	+	7/8-18	-10	5/8	3.02	58	2-5/16	59	2.18	55	7/8
16991N-12-12	+	1-1/16-16	-12	3/4	3.36	85	2-9/16	64	2.51	64	1-1/16

* Steel tube, nipple, nut and shell.

C – All components 303 stainless steel.

17791N SAE 45° Swivel 45° Elbow



91N Series Permanent

*Part Number	C	Thread Size	Inch	Tube Size	A		Cutoff Allow. B		E		J Hex
				Inch	Inch	MM	Inch	MM	Inch	MM	Inch
17791N-6-6	+	5/8-18	-6	3/8	2.06	52	1-5/16	33	0.39	10	3/4
17791N-12-12	+	1-1/16-14	-12	3/4	3.07	78	2-7/16	62	0.78	20	1-1/4

* Steel tube, nipple, nut and shell.

C – All components 303 stainless steel.

(+) Non Standard. See page 2 for information on non-standard products.

Smoothbore PTFE Hose

Convuluted PTFE Hose

Flare Seal Hose

Silicone Hose

Specialty Hoses

Fittings Permanent

Accessories

Technical Help

Warranty



Parker Hannifin, Parflex Division