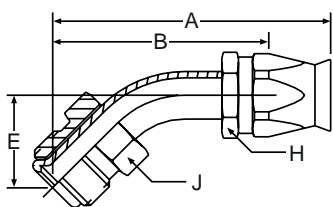


FIELD ATTACHABLE FITTINGS

26790 - SAE Male Inverted Flare Swivel - 45° Elbow

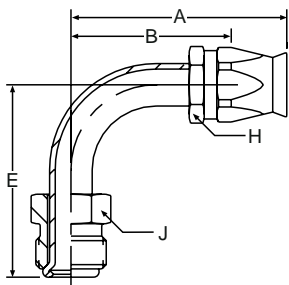


90 Series Field Attachable

Hose Number	Part Number	Thread Size	Deduct Length
-04	26790-4-4	7/16" - 24	1-11/16"
-05	N/A	7/16" - 24	1-11/16"
-05	26790-5-5	1/2" - 20	2"
-06	26790-5-6	1/2" - 20	2-1/16"
-06	26790-6-6	5/8" - 18	2-1/8"
-08	26790-8-8	3/4" - 18	2-1/16"
-12	26790-12-12	1-1/16" - 16	2-15/32"

NOTES: Brass ferrule, steel tube, nut & socket.

26990 - SAE Male Inverted Flare Swivel - 90° Elbow

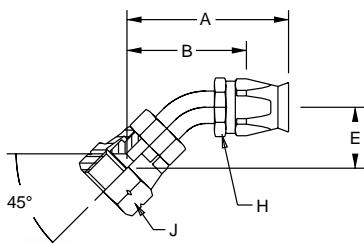


90 Series Field Attachable

Hose Number	Part Number	Thread Size	Deduct Length
-04	26990-4-4	7/16" - 24	1-9/16"
-05	26990-4-5	7/16" - 24	1-5/8"
-05	26990-5-5	1/2" - 20	1-1/2"
-06	26990-5-6	1/2" - 20	1-9/16"
-06	26990-6-6	5/8" - 18	1-1/2"
-08	26990-8-8	3/4" - 18	1-11/16"
-12	26990-12-12 *NS	1-1/16" - 16	2-3/16"

NOTES: Brass ferrule, steel tube, nut & socket.

27790 - 45° SAE Female Swivel - 45° Elbow



90 Series Field Attachable

Hose Number	Part Number	Thread Size	Deduct Length
-06	27790-6-6	5/8" - 18	1-3/16"
-12	27790-12-12	1-1/16" - 14	2-7/32"

NOTES: Brass ferrule, steel tube, nut & socket

Smoothbore PTFE Hose

Convuluted PTFE Hose

Flare Seal Hose

Silicone Hose

Specialty Hoses

Fittings Field Attachable

Accessories

Technical Help

Warranty



Parker Hannifin, Parflex Division